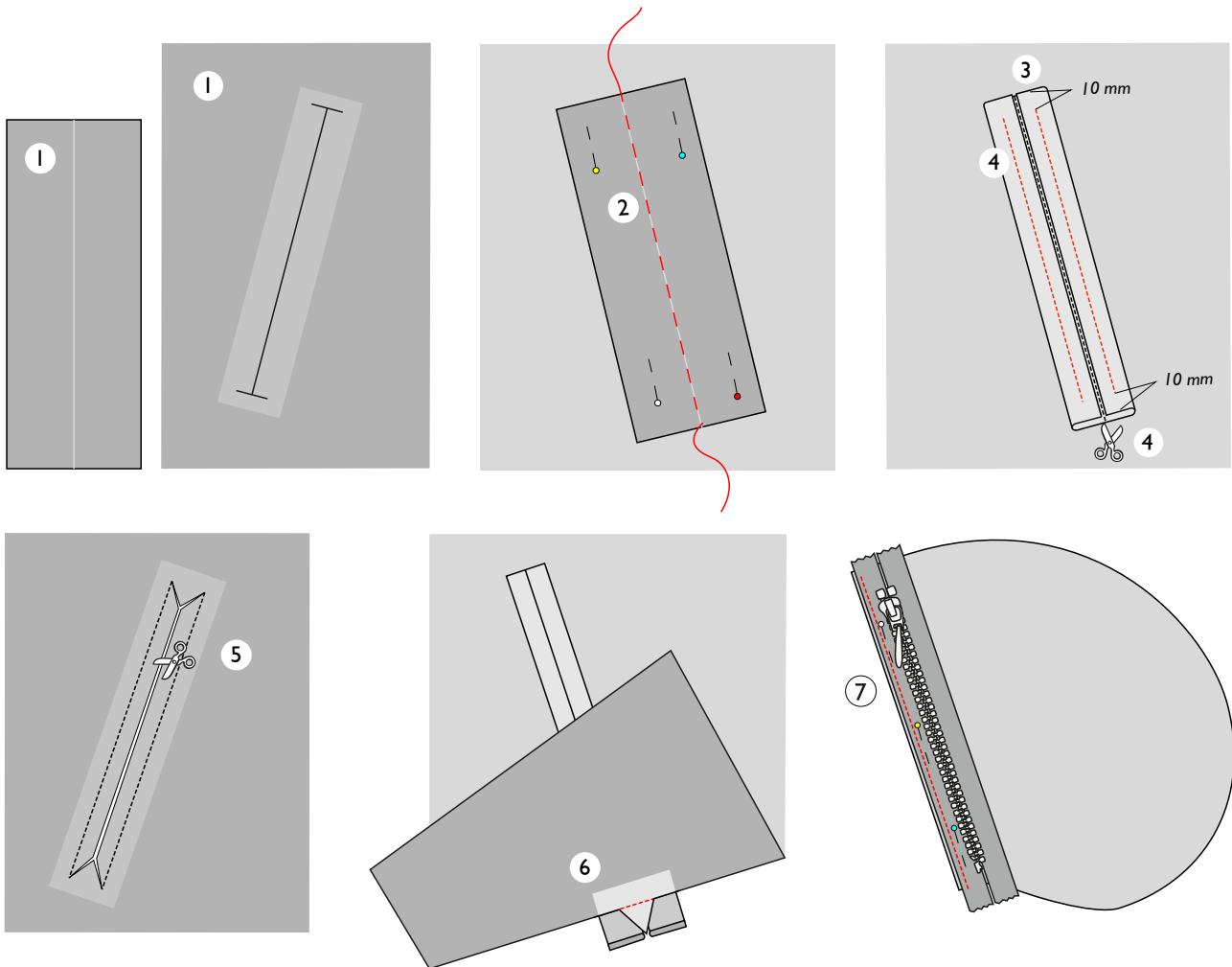


ZIPPERED DOUBLE-WELT POCKET II

OTTOBRE design®



CUTTING

Cut the following pieces for the pocket:

- inner pocket piece
- outer pocket piece
- pocket welt*

Add 10 mm seam allowances to edges of pocket pieces. *Pattern piece for pocket welt includes seam allowances.

SEWING

1. Mark center line on wrong side of pocket welt with tailor's chalk. Mark placement of pocket opening on right side of garment's front/pants front, observing pattern markings.

Fuse 3 cm x 16 cm piece of interfacing to wrong side of pocket opening area on garment's front/pants front.

2. Pin pocket welt to garment's front/pants front right sides together, aligning its center line with marking for pocket opening. Baste welt in place along center line.

3. Turn and press long edges of welt to wrong side of welt, so that they are aligned with center line.

4. Stitch two rows of stitching through all layers along pocket welt, placing them on either side of pocket opening and stitching exactly

in the middle of folded portions of welt. Start and end stitching 10 mm away from ends of welt.

Remove basting stitches and cut pocket welt in half along center line.

5. Lay garment's front/pants front wrong side up and slash pocket opening from wrong side, cutting diagonally to ends of previous rows of stitching to form triangles at ends of pocket opening.

6. Turn edges of pocket opening and welts to wrong side and flip pocket welts in position. Pin and stitch triangles, formed at ends of pocket opening when slashing it, to pocket welts. Press pocket opening.

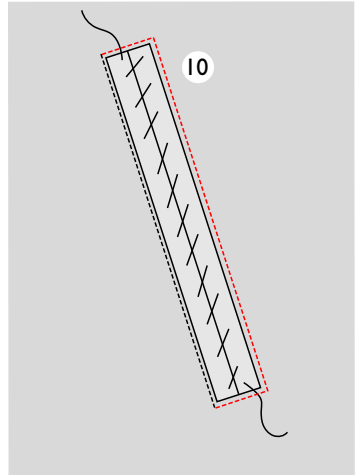
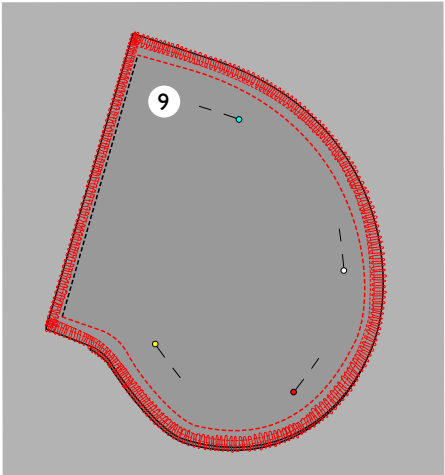
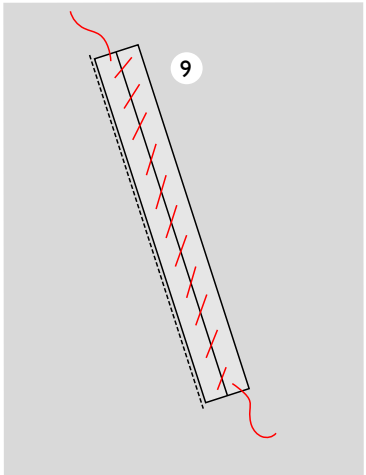
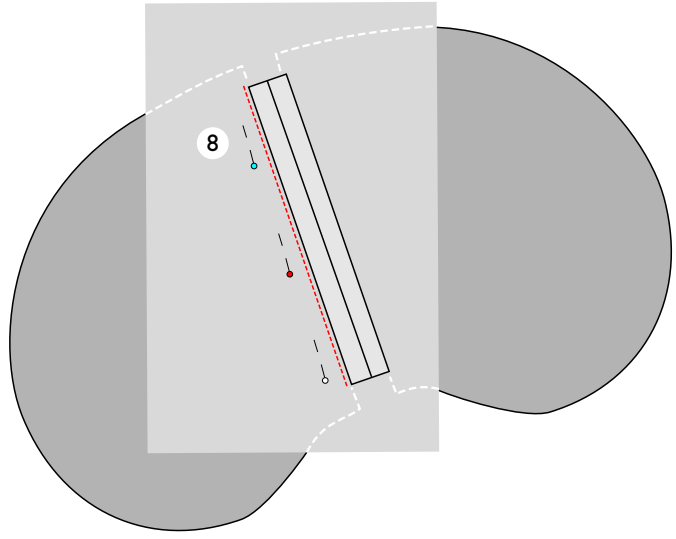
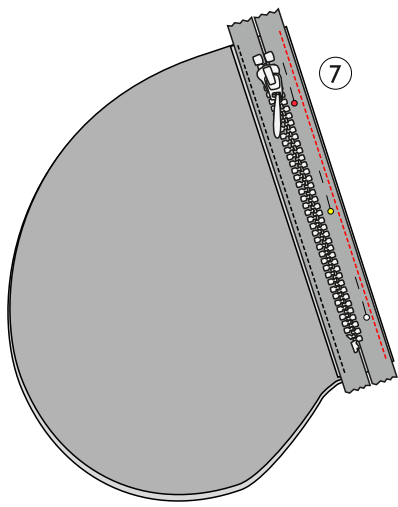
7. Stitch pocket pieces to zipper as follows: Stitch outer pocket piece to zipper half to be placed closest to garment's center-front and inner pocket piece to zipper half to be placed closest to garment's side seam, placing right side of each pocket piece against wrong side of zipper and aligning straight edges of pocket pieces with outer edges of zipper tapes. Place stitching 5 mm away from zipper teeth.

The pocket pieces will then be the right sides together, and the zipper slider will be at the upper edge of the pocket when the zipper is closed.

OTTOBRE

ZIPPERED DOUBLE-WELT POCKET II

OTTOBRE design®



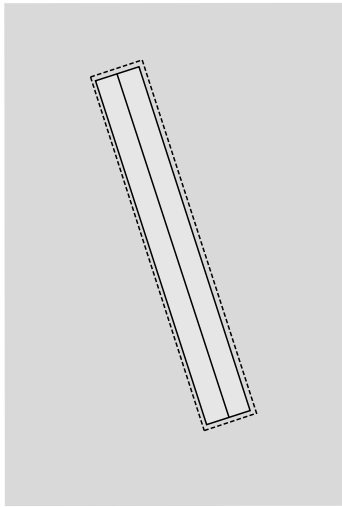
8. Pin zipper to wrong side of garment's front/pants front under pocket opening, placing zipper teeth in the middle of opening (zipper slider lies at upper end of pocket opening). Stitch edge of pocket opening closest to center-front to zipper half under it close to edge from right side, flipping inner pocket piece out of the way as you stitch.

9. Whipstitch edges of pocket welts together along the middle of pocket opening. Pin and stitch pocket pieces right sides together, then serge or zigzag their seam allowances together.

10. Pin and stitch the other edge and ends of pocket opening to zipper (and to inner pocket piece), stitching from right side close to edge.

Remove whipstitches.

All done!



© Copyright
The designs, instructions and patterns are only intended for personal use by sewing hobbyists. All commercial or industrial use is prohibited. The designs, instructions, patterns, drawings and photos are protected by copyright laws and the right of reproducing them by any means or in any form is exclusively reserved for the copyright holder. The transferring of the material to a device that can be used for copying it is also regarded as reproduction. All rights reserved.

© OTTOBRE design®
| STUDIO TUUMAT OY |

OTTOBRE