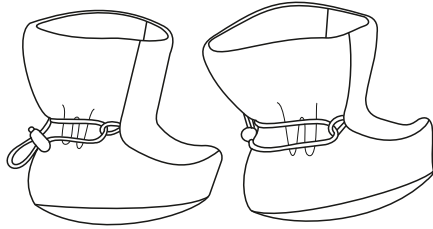


# VELOUR BABY BOOTEES

OTTOBRE design®  
4/2019

shoe size 16-18-20-22



## MATERIALS

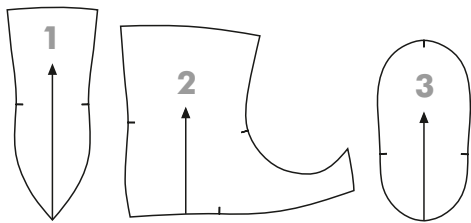
- for exterior: 20 cm velour knit (CO/PES), width 150 cm, weight 256 g/m<sup>2</sup>, stretch/recovery 10%
- for lining: 20 cm printed cotton single jersey (CO/EL), width 150 cm, weight 210 g/m<sup>2</sup>, stretch/recovery 20%
- 20 cm cotton batting (CO), width 150 cm, weight 80 g/m<sup>2</sup>, Vlieseline® 277 Cotton
- 80 cm elastic cord in the color that matches velour knit
- 2 two-hole cord locks



## PATTERN PIECES

cut

	Exterior	Lining
1 front panel	2	2
2 side panel	2+2	2+2
3 foot sole	2	2



## CUTTING

Preshrink the fabrics by washing and steaming them thoroughly before cutting the bootie pieces out.

**Cutting exterior and lining:** Cut bootie exterior pieces from velour knit and lining pieces from single jersey as indicated on list of pattern pieces, adding 10 mm seam allowances to edges of exterior pieces and 6 mm seam allowances to edges of lining pieces. Lay pattern pieces on velour knit so that fabric nap runs up on all exterior pieces (i.e. in the same direction as grainline arrows on pattern pieces).

## SEWING

**Construction techniques:** Stitch seams both on bootie exterior and bootie lining with straight stitch using 10 mm seam allowance. Lining will thus be slightly smaller than exterior, making it a better fit within exterior. Set stitch length at 4 stitches per cm and decrease needle thread tension a little in order to make the stitching slightly stretchy. No seam finish is necessary as all seam allowances will be concealed between bootie exterior and lining.

**Batting:** Pin ready-cut lining pieces on batting right sides up and cut batting pieces out along edges of lining pieces. Machine-baste lining and batting pieces together close to edge with straight stitch.

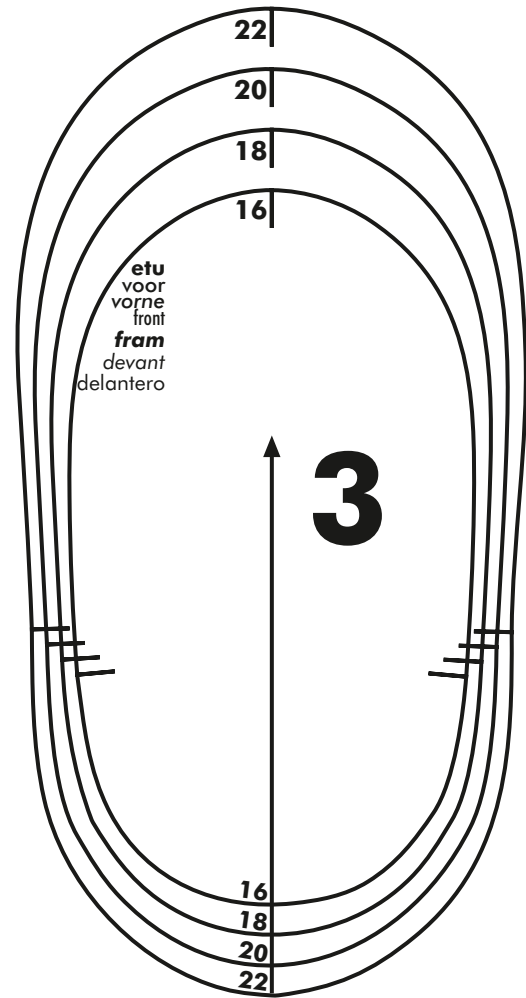
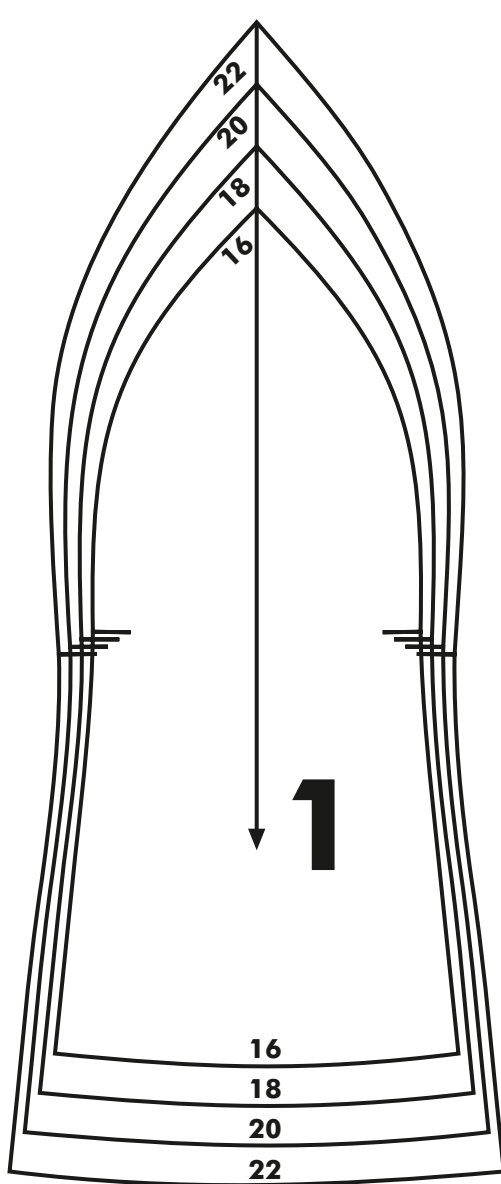
**Joining bootie exterior:** Cut four 5 cm pieces of elastic cord. Fold pieces into loops and machine-baste their ends to right side of side edges of front panels observing pattern markings. Pin side panels right sides together in pairs and stitch front seams. Press seams open. Pin and stitch front panels to side panels right sides together, placing tip of front panel at front seam that joins side panels. Trim seam allowances at tip of each bootie slightly.

Cut two 30 cm pieces of elastic cord. Thread cord pieces through cord locks and slide locks to center of cords. Thread ends of each cord through cord loops on booties from front to back, then machine-baste them to back-seam seam allowances on side panels observing pattern markings. Pin and

# OTTOBRE

# VELOUR BABY BOOTEES

OTTOBRE design®  
4/2019



stitch back seam of each bootie right sides together. Press seams open. Pin and stitch foot soles to booties right sides together. Trim seam allowances slightly.

**Joining bootie lining:** Construct bootie lining in the same way as bootie exterior, without elastic cords and cord loops. Leave 3 cm wide opening for turning in the middle of back seam of each bootie lining. Trim seam allowances on each bootie lining to 3 mm.

**Joining bootie exterior and lining:** Place bootie exterior and lining within one another right sides together and stitch their top edges together. Pull exterior and lining apart, both still inside out. Place exterior and lining soles together and stitch their seam allowances together with a few hand stitches sewn at bootie back seam. Turn bootie right side out through opening for turning, place lining in position within exterior and close opening for turning by hand.

## © Copyright

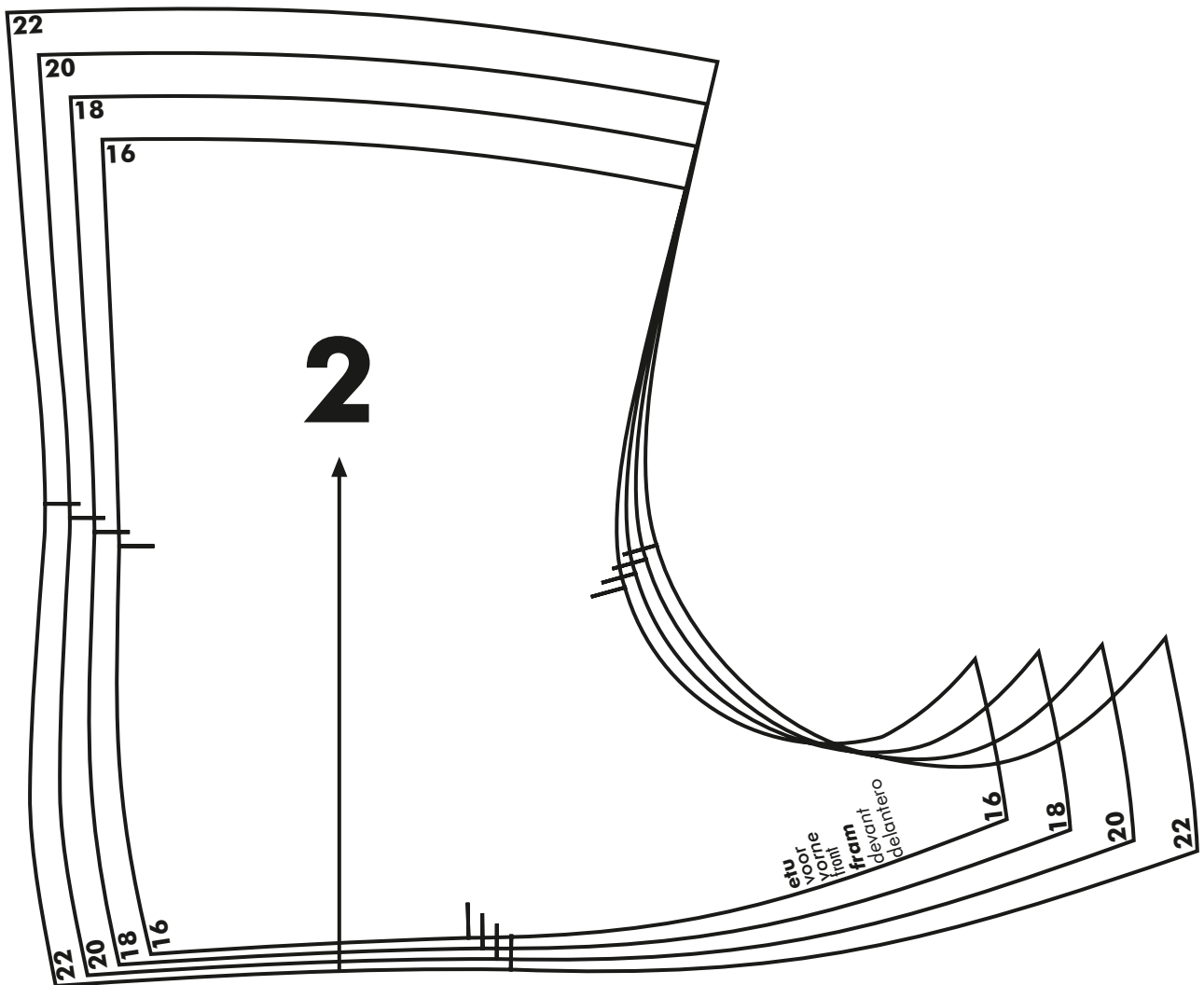
The designs, instructions and patterns are only intended for personal use by sewing hobbyists. All commercial or industrial use is prohibited. The designs, instructions, patterns, drawings and photos are protected by copyright laws and the right of reproducing them by any means or in any form is exclusively reserved for the copyright holder. The transferring of the material to a device that can be used for copying it is also regarded as reproduction. All rights reserved.

© OTTOBRE design® | STUDIO TUUMAT OY | 2019

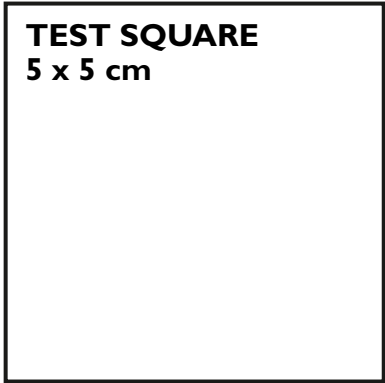
# OTTOBRE

# VELOUR BABY BOOTEES

OTTOBRE design®  
4/2019



Set  
the printer  
to print at 100%  
(no scaling).  
Measure the size  
of the test square  
on your  
printed-out  
pattern!



# OTTOBRE