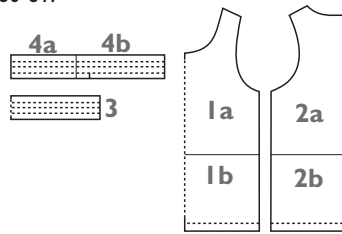


SLEEVELESS TANK TOP

80-86-92-98-104-110-116-122 cm

Pictured in OTTOBRE design® 3/2006, pages 57, 60-61.



PATTERN PIECES

PATTERN PIECES	cut
1a+b front	1
2a+b back	1
3 neckline binding*	1
4a+b armhole binding*	2

MATERIALS

- 40-40-45-50-50-55-55-55 cm interlock knit
- 10 cm ribbing

For print:

- brown fabric paint
- scalpel or small sharp scissors
- plastic sheeting (e.g. plastic pocket) for template
- spray adhesive, Gold-Zack
- painter's tape
- disposable plate and spoon
- piece of sponge

Read the instructions and experiment with printing on a scrap of fabric before starting!

CUTTING

Cut neckline and armhole bindings from ribbing and other garment pieces from interlock knit as indicated on list of pattern pieces.

Check length of bindings before sewing as the stretch and recovery qualities of different knits vary.

Patterns for bindings* include seam allowances. Do not add seam allowances to neckline and armholes.

SEWING

Seams and hems: Stitch seams with serger or use overedge stretch stitch on regular sewing machine.

Turtle-print

1. Trace motif on plastic sheeting and cut shaded parts of motif out.

2. Spray adhesive on wrong side of template and bond template to front panel. Bond the eight template cut-outs in the middle of turtle motif using spray adhesive. Secure edges of template in place with painter's tape and cover rest of front panel to protect it from paint splashes.

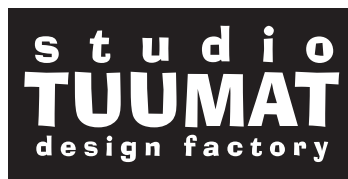
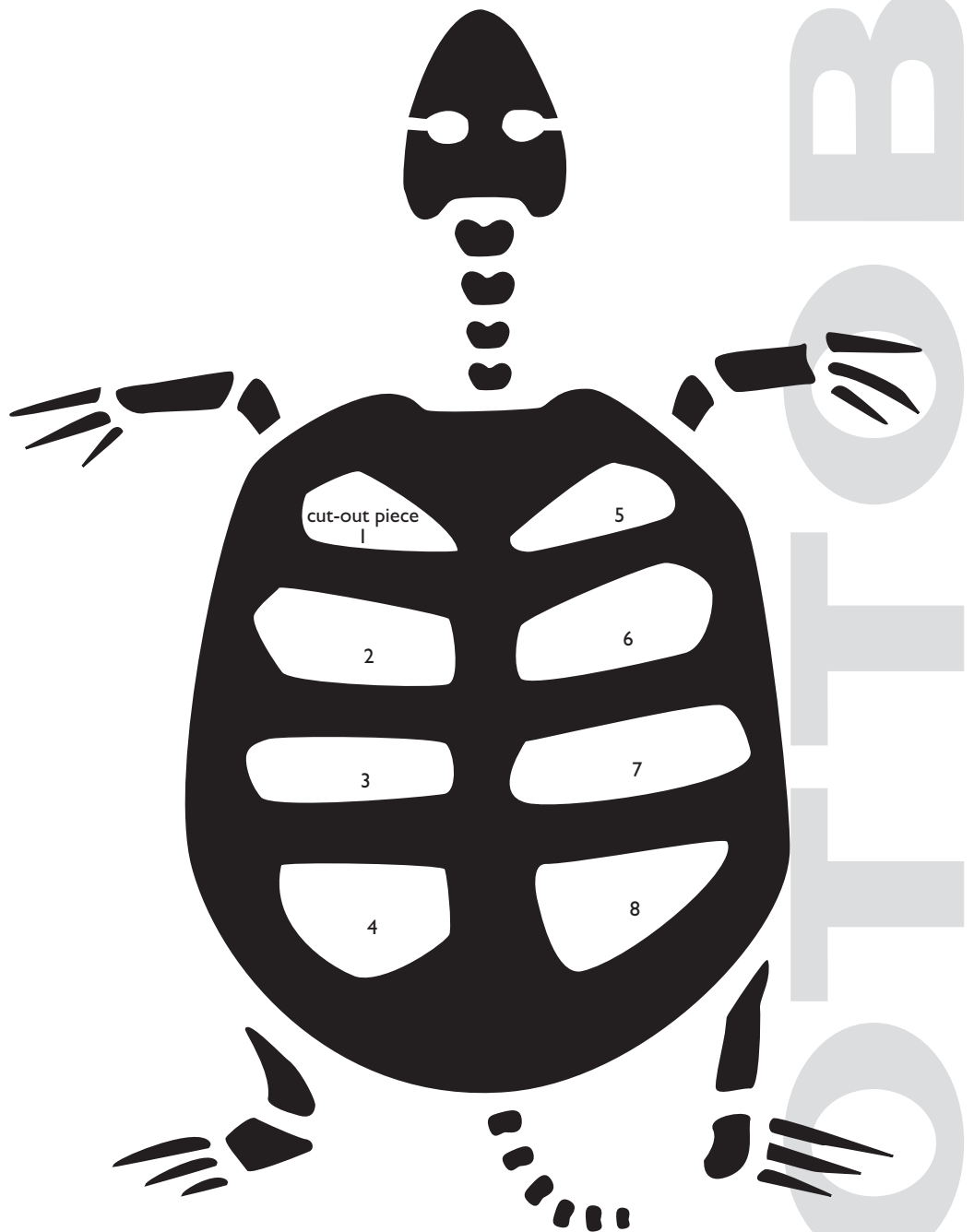
3. Pour a small amount of paint on disposable plate and dab sponge in it so that paint gets evenly distributed on sponge.

4. Dab a small amount of paint at a time in openings on template with sponge.

5. Allow print to dry properly and fix it to fabric by pressing, following directions on paint container.

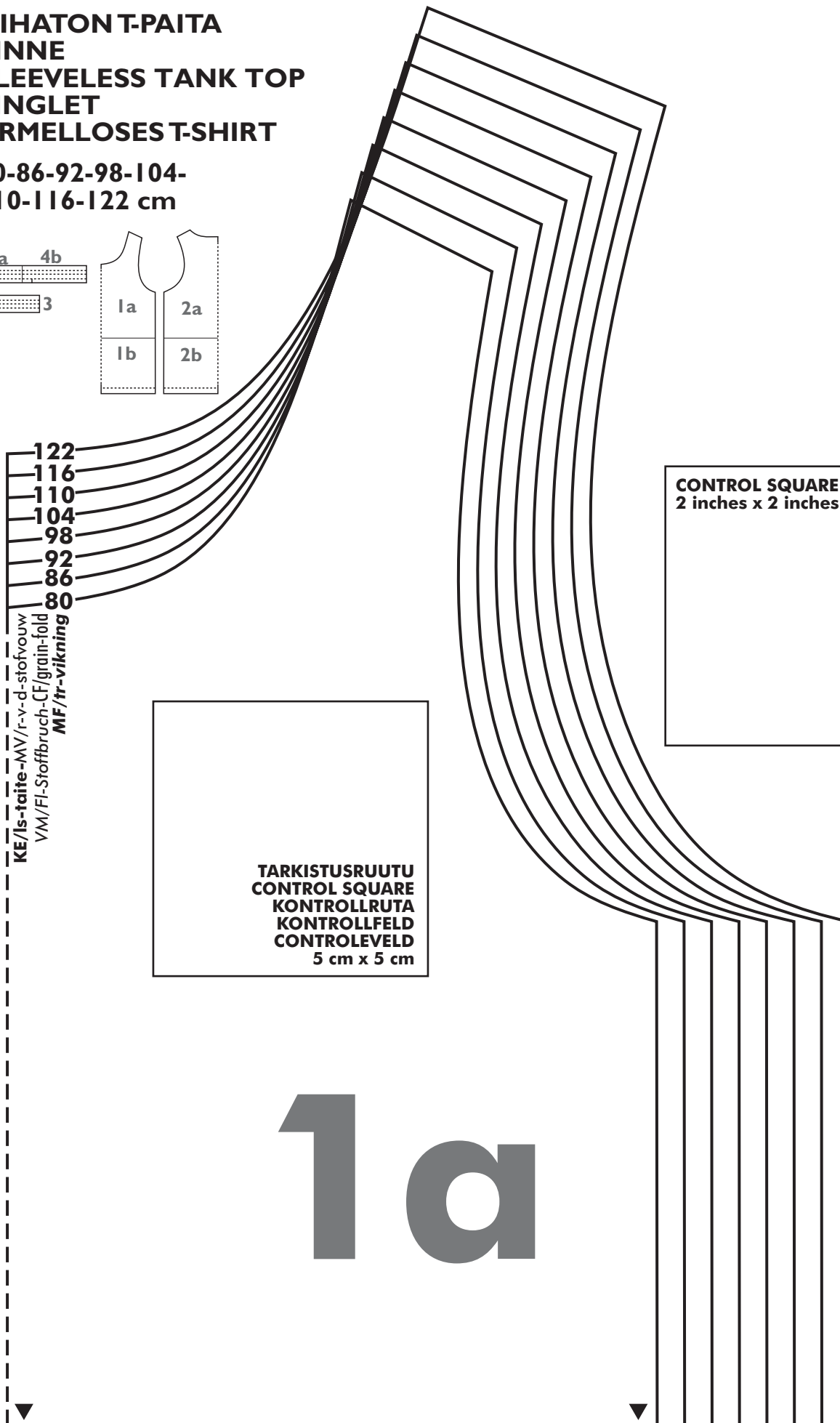
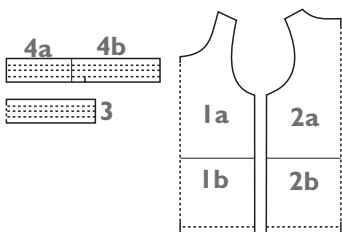
Joining: Stitch one shoulder seam. Finish neckline with binding as follows: Stitch right side of binding to wrong side of neckline. Fold binding to right side, turn its seam allowance under and double-topstitch it in place close to edge. Stitch the other shoulder seam. Finish armholes with binding in the same way as neckline. Stitch side seams.

Fold up and press bottom hem, and topstitch it with serger coverstitch or on regular sewing machine using double-needle or suitable decorative overedge stitch.



**HIHATON T-PAITA
LINNE
SLEEVELESS TANK TOP
SINGLET
ÄRMELLOSES T-SHIRT**

**80-86-92-98-104-
110-116-122 cm**



**KE/ls-taite-MV/r-v-d-stofvouw
VM/Fl-Stoffbruch-CF/grain-fold
MF/tr-vikning**

**TARKISTUSRUUTU
CONTROL SQUARE
KONTROLLRUTA
KONTROLLFELD
CONTROLEVELD
5 cm x 5 cm**

**CONTROL SQUARE
2 inches x 2 inches**

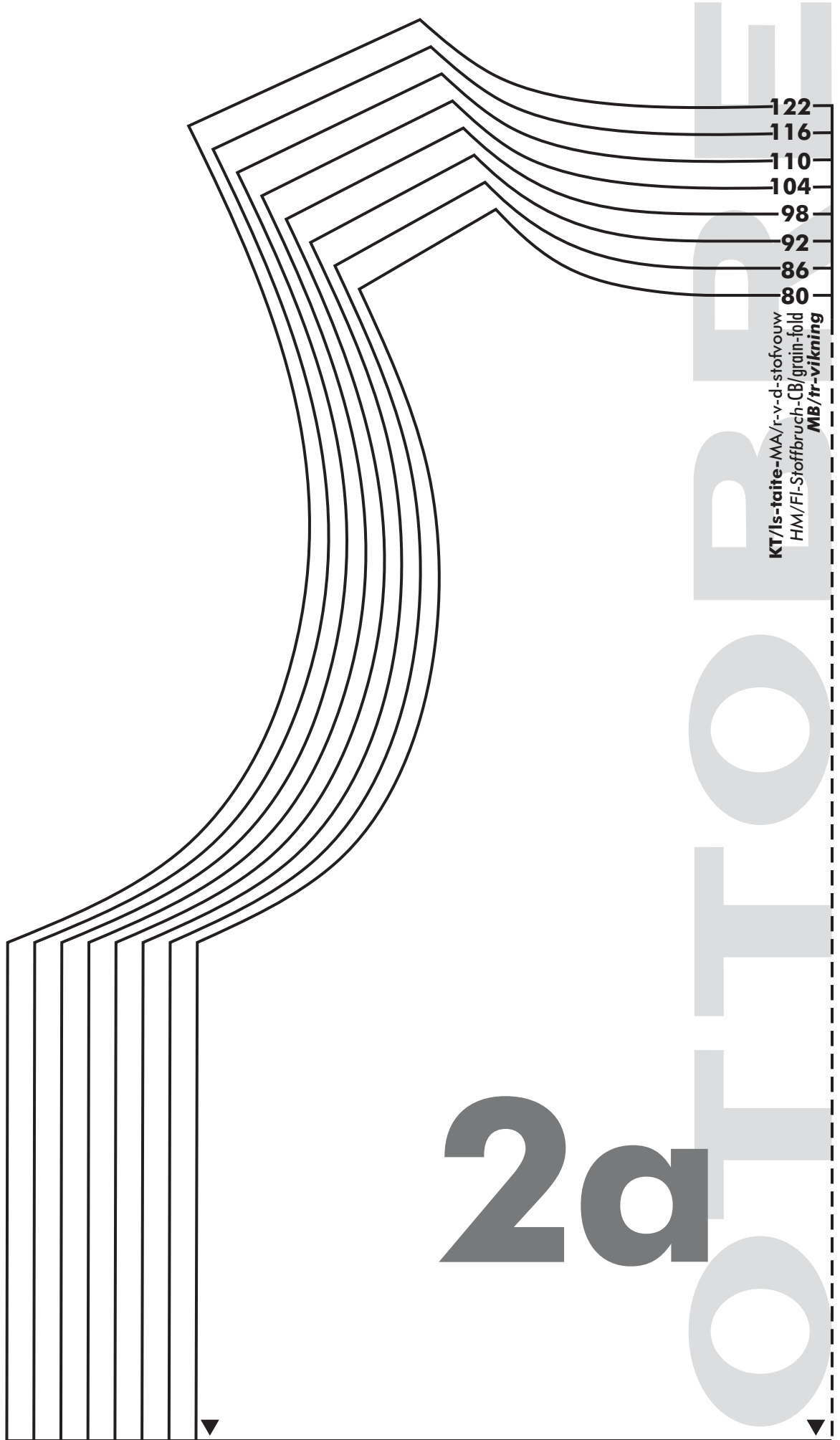
1 a

OTTOTRE

Is-taite
r/v-d-stofvouw
Fl-Stoffbruch
grain-fold
tr-vikning

3

80		
86		
92		
98		
104		
110		
116		
122		



1b

80

86

92

98

104

110

116

122

4a

80

86

92

98

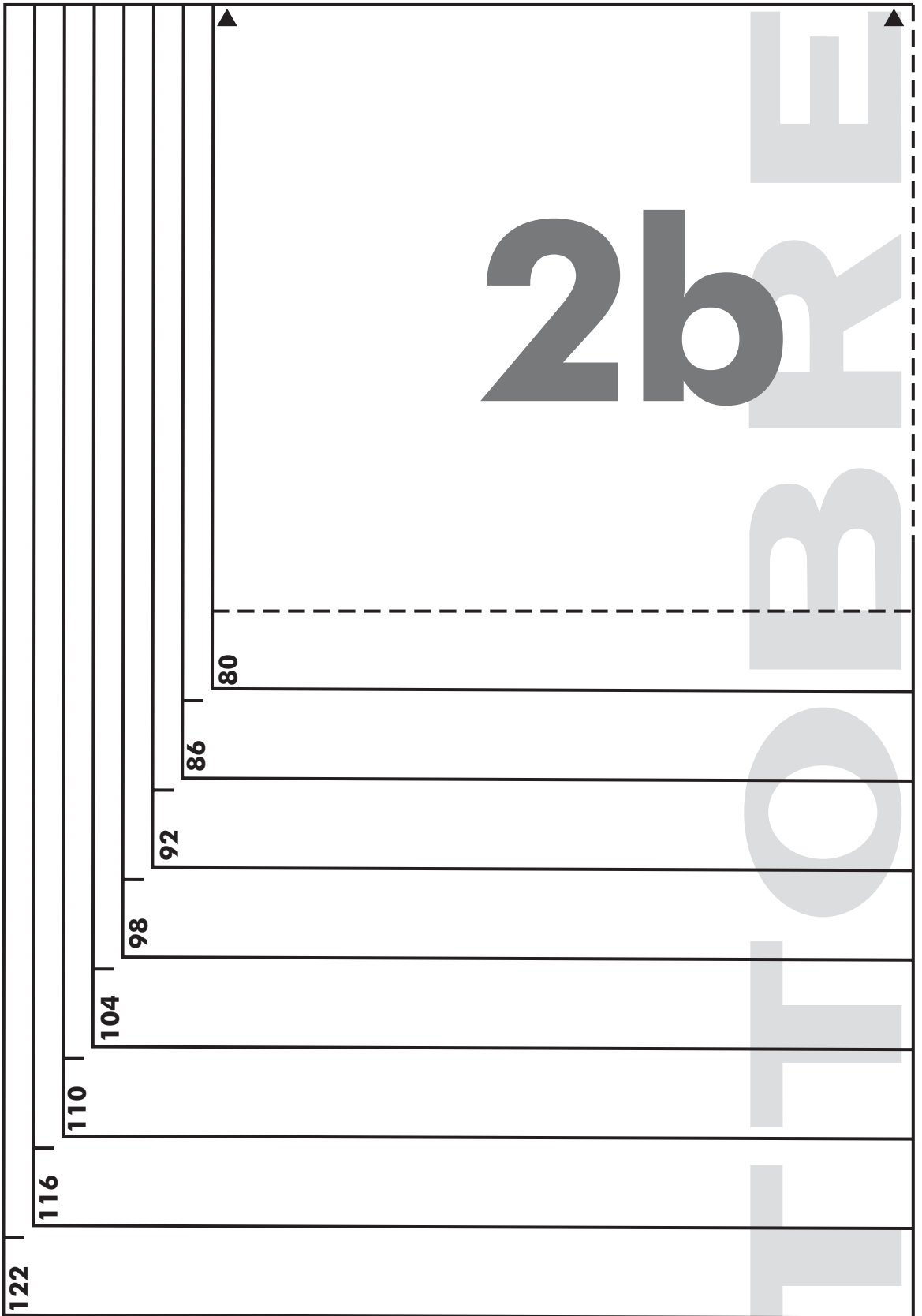
104

110

116

122

OTTOTTERE



olka-schouder
| Schulter-shoulder-axel