
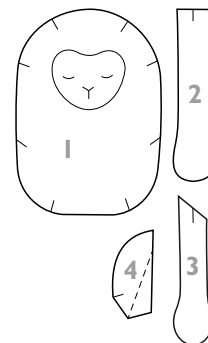


**MATERIALS**

- 30 cm x 15 cm piece of dotted cotton single jersey
- 30 cm x 30 cm piece of natural-color linen fabric
- piece of interfacing, Vlieseline® G 785
- double-sided fusible web, Vlieseline® Vliesofix
- tear-away backing, Vlieseline® Stickvlies
- dark-grey topstitching thread, Epic no. 80
- toy stuffing

PATTERN PIECES**cut**

1 body	2
2 back leg	2+2
3 front leg	2+2
4 ear	2+2
 lamb's face	

**CUTTING**

Cut body pieces from cotton single jersey, adding 10 mm seam allowances to their edges. Note that the lamb's legs and ears are cut later.

SEWING

Construction techniques: Stitch seams with straight stitch. No seam finish is necessary as all seam allowances will be concealed within the lamb. It's advisable to sew the seams with two rows of stitching to make the toy durable.

Stabilizing: Fuse interfacing to both body pieces.

Lamb's face: Trace lamb's face from pattern sheet on paper backing of double-sided fusible web and cut it out with generous allowances. Iron face onto wrong side of piece of linen fabric and cut it out along its outlines. Remove paper backing of fusible web from wrong side of face. Iron face onto right side of one of the body pieces as marked on pattern.

Pin piece of tear-away backing to wrong side of body piece under face area. Stitch face in place close to edge with straight stitch using sewing thread that matches linen fabric. Embroider eyes and mouth on face with straight stitch using dark-grey topstitching thread. Secure thread ends carefully. Remove tear-away backing from wrong side and steam face area from right side.

Front and back legs:

Figure 1: Cut two 14 cm x 11 cm pieces from linen fabric.

Place pieces right sides together. Cut two front leg patterns and two back leg patterns from paper. Pin leg patterns on pieces of linen fabric side by side, leaving at least 5 mm seam allowances around each of them. Stitch outlines of legs with short straight stitch along edges of paper patterns. Leave attachment edges of legs unstitched and backstitch at the start and end of stitching line.

Figure 2: Cut legs out with 5 mm seam allowances, except cut along their attachment edges without adding seam allowances. Finger-press seams open and turn legs right side out. Fill legs with toy stuffing. Machine-baste attachment edges of each leg together.

Ears:

Figure 3: Cut 8 cm x 8 cm piece from both linen fabric and single jersey. Place pieces right sides together. Cut two ear patterns from paper and pin them on pieces of linen fabric and single jersey side by side, leaving at least 5 mm seam allowances around each of them (note that completed ears should be mirror images of each other). Stitch outlines of ears with short straight stitch along edges of paper patterns. Leave attachment edges of ears unstitched and backstitch at the start and end of stitching line.

Figure 4: Cut ears out with 5 mm seam allowances, except cut attachment edges with 10 mm seam allowances. Trim corners and turn ears right side out.

OTTOBRE

SOFT TOY LAMB

OTTOBRE design®
4/2019

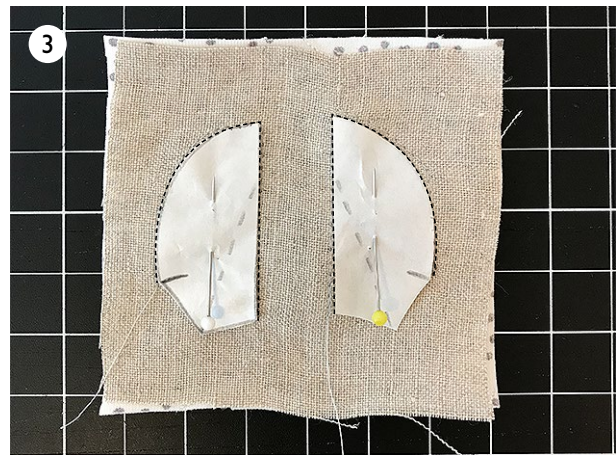
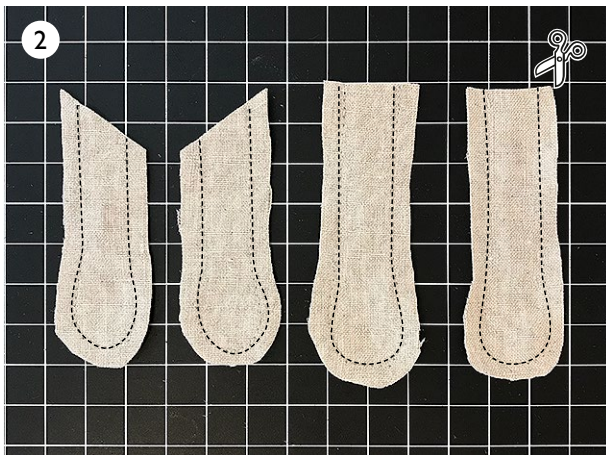
Figure 5: Fold ears in half observing pattern markings and machine-baste them in position along attachment-edge seam allowances.

Assembly:

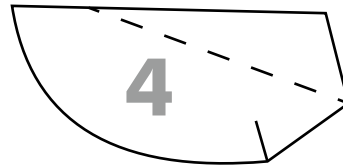
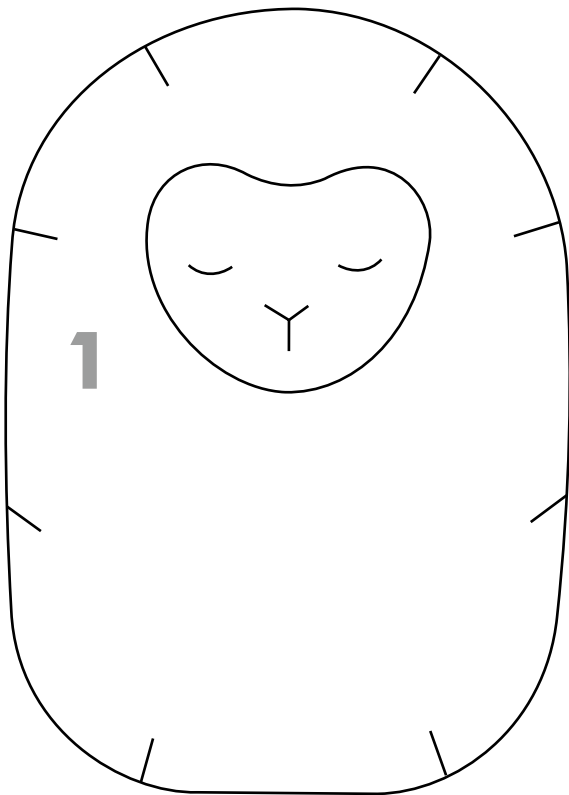
Figure 6: Machine-baste legs and ears to one of the lamb's body pieces as marked on pattern, right sides together.

Figure 7: Pin and stitch body pieces right sides together, leaving opening for turning between pattern markings at the top of the lamb's head.

Figure 8: Trim seam allowances and turn lamb right side out. Fill the lamb with toy stuffing until firm. Turn raw edges of opening for turning in and close opening by hand-stitching.



OTTOBRE



© Copyright

The designs, instructions and patterns are only intended for personal use by sewing hobbyists. All commercial or industrial use is prohibited. The designs, instructions, patterns, drawings and photos are protected by copyright laws and the right of reproducing them by any means or in any form is exclusively reserved for the copyright holder. The transferring of the material to a device that can be used for copying it is also regarded as reproduction. All rights reserved.

© OTTOBRE design® | STUDIO TUUMAT OY |

OTTOBRE