

HOBBY-FOX

For a child aged 3-5 years

MATERIALS

- 25 cm orange felt-like fabric
- pieces of black and white fabric
- 65 g toy stuffing
- double-sided interfacing, Vlieseline® Vliesofix
- wooden stick, ø 20 mm, length 60 cm
- piece of thin string
- stapler, painter's tape, knife and sandpaper

PATTERN PIECES cut

1 head side panel	2	orange
2 lower head panel	1	orange
3 outer ear piece	2	orange
3 inner ear piece	2	white
4 covering sleeve	1	orange
5 nose	1	black
6 eyes	2	black

Pattern pieces include seam allowances!

CUTTING

Cut pieces from fabrics as indicated on list of pattern pieces.

INSTRUCTIONS

Ears: Stitch inner and outer ear pieces together in pairs, right sides facing. Turn ears right side out. Machine-baste ears to edges of darts on head side panels. Stitch darts.

Stitch head side panels together as far as notch and press seam open.

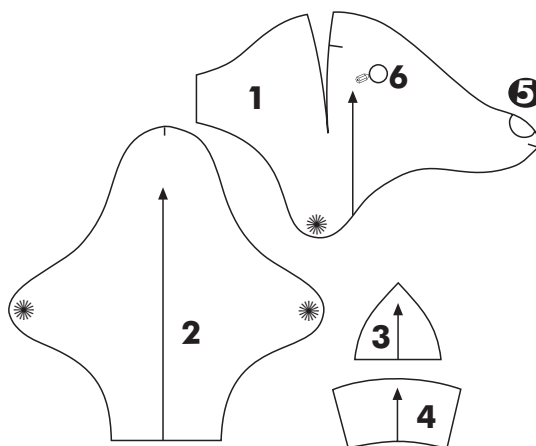
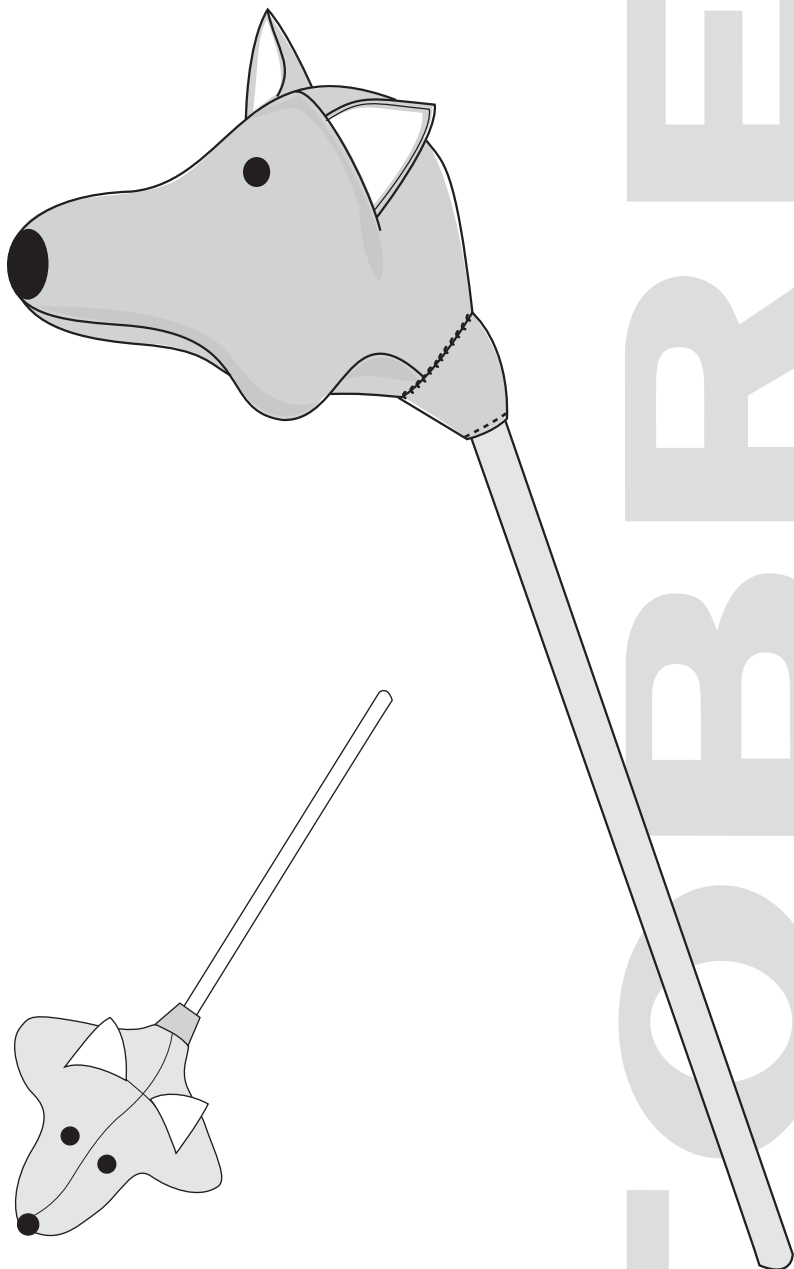
Eyes and nose: Fuse piece of double-sided interfacing to wrong side of black fabric and cut eyes and nose out from it without adding seam allowances. Fuse eyes and nose to head. Stitch shapes in place with narrow short zigzag close to edge.

Head: Pin head panels together, right sides facing, and stitch along outer edges. Trim seam allowances and clip them along curves, and turn head right side out. Stuff muzzle and front part of head firm with wadding.

Stick: Wrap wadding around one end of stick into tennis-ball size lump and secure it in place with painter's tape and staples; the lump will stop the stick from slipping out of the head. Neaten other end of stick with knife and sandpaper surface of stick smooth.

Covering sleeve: Stitch short edges of covering sleeve piece together. Sew hem at narrower end of covering sleeve. Insert stick into covering sleeve with narrower end of sleeve pointing downwards.

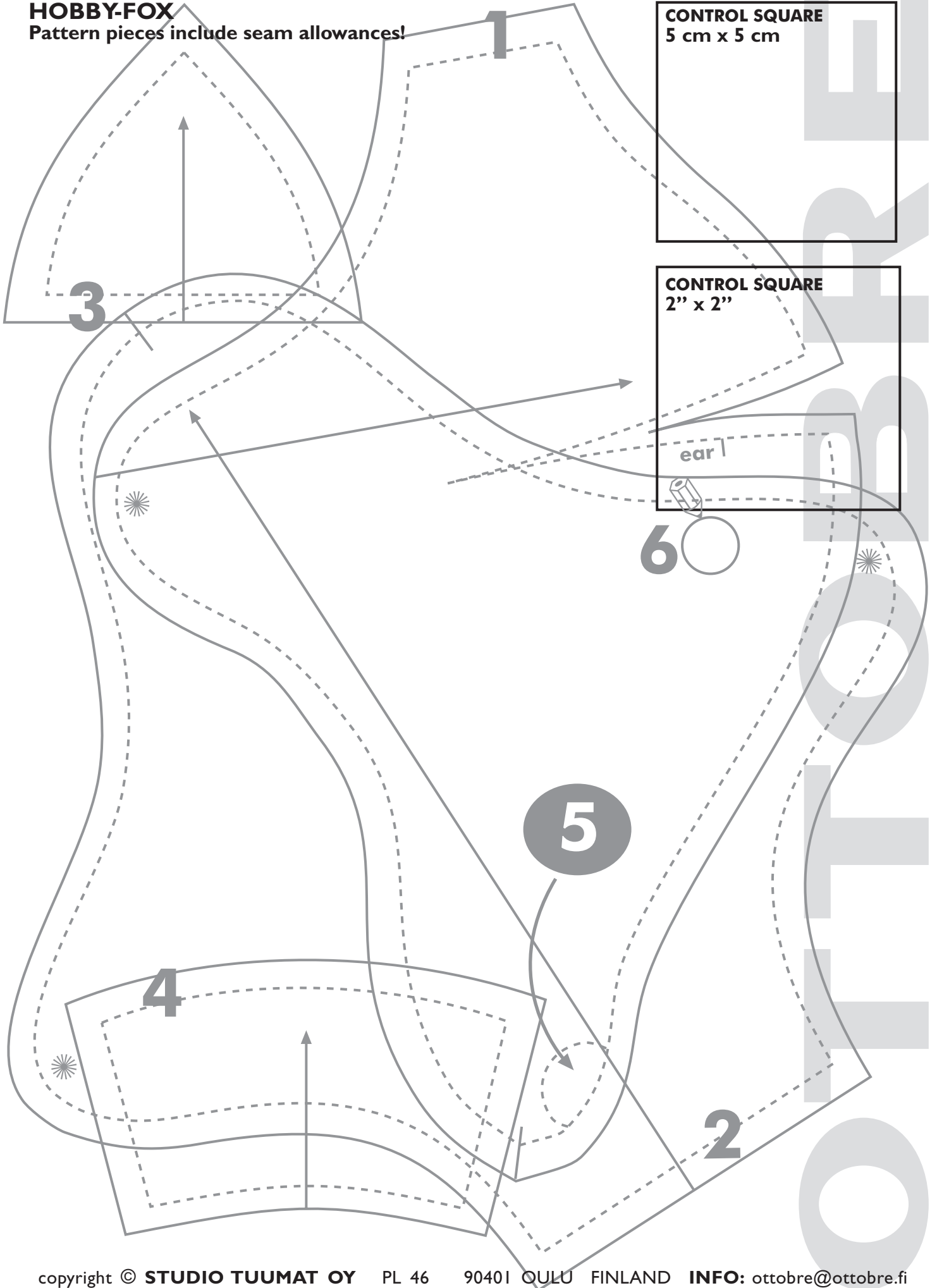
Joining head and stick: Insert stick into head and stuff head firm with wadding. Secure head tightly to stick with string and staples. Turn seam allowance at upper edge of covering sleeve in and sew edge to fox's neck by hand so that sleeve covers string and staples.



studio
TUUMAT
design factory

HOBBY-FOX

Pattern pieces include seam allowances!



CONTROL SQUARE
5 cm x 5 cm

CONTROL SQUARE
2'' x 2''

ear |

6

5

4

2