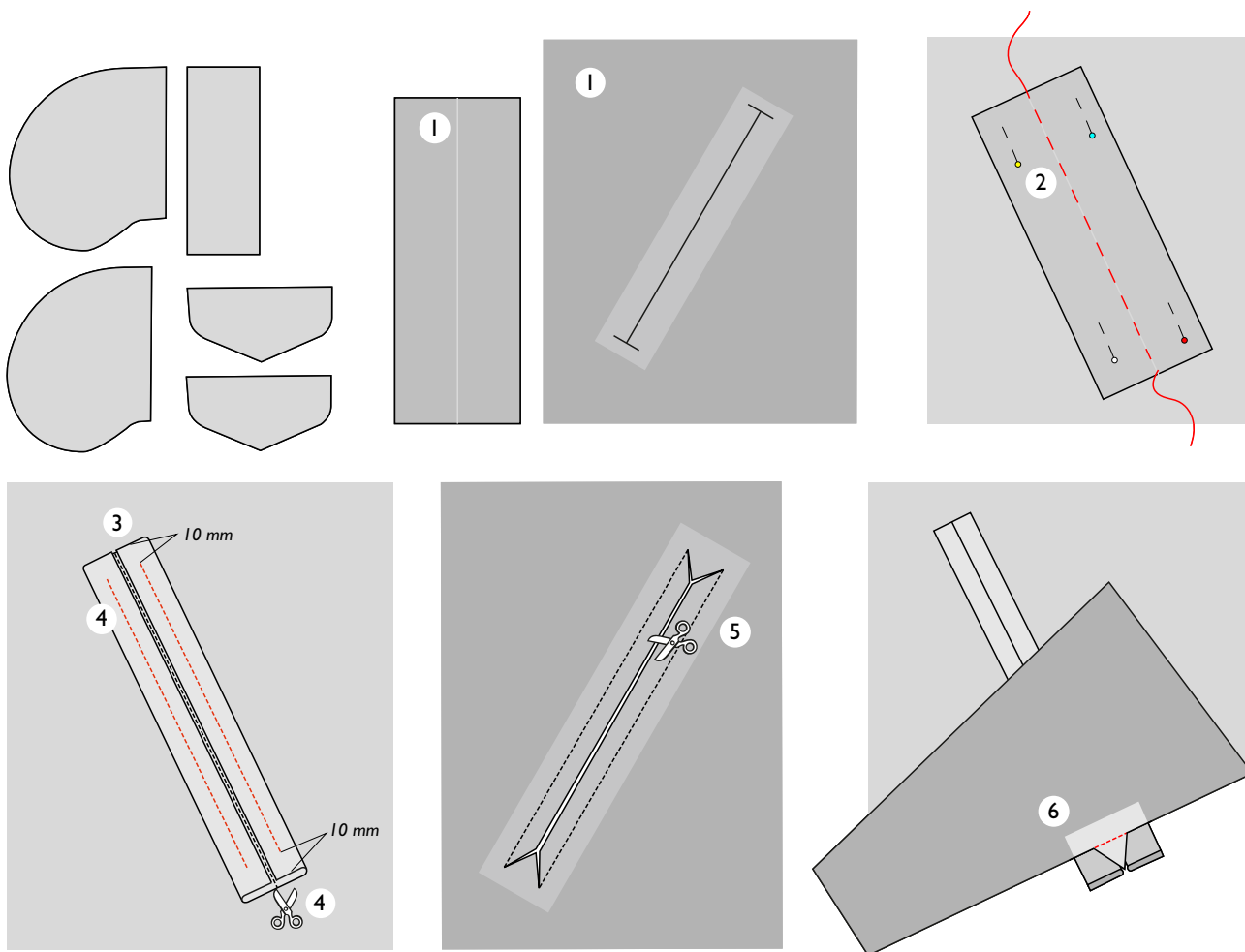


# DOUBLE-WELT POCKET WITH A FLAP

OTTOBRE design®  
3/2019



## CUTTING

Cut the following pieces for the pocket:

- inner pocket piece
- outer pocket piece
- 2 pocket flap pieces
- pocket welt\*

Add 10 mm seam allowances to edges of pocket pieces and pocket flap pieces. \*Pattern piece for pocket welt includes seam allowances.

## SEWING

1. Mark center line on wrong side of pocket welt with tailor's chalk. Mark placement of pocket opening on right side of garment's front, observing pattern markings.

Fuse 3 cm x 16 cm piece of interfacing to wrong side of pocket opening area on garment's front.

2. Pin pocket welt to garment's front right sides together, aligning

its center line with marking for pocket opening. Baste welt in place along center line.

3. Turn and press long edges of welt to wrong side of welt, so that they are aligned with center line.

4. Stitch two rows of stitching through all layers along pocket welt, placing them on either side of pocket opening and stitching exactly in the middle of folded portions of welt. Start and end stitching 10 mm away from ends of welt.

Remove basting stitches and cut pocket welt in half along center line.

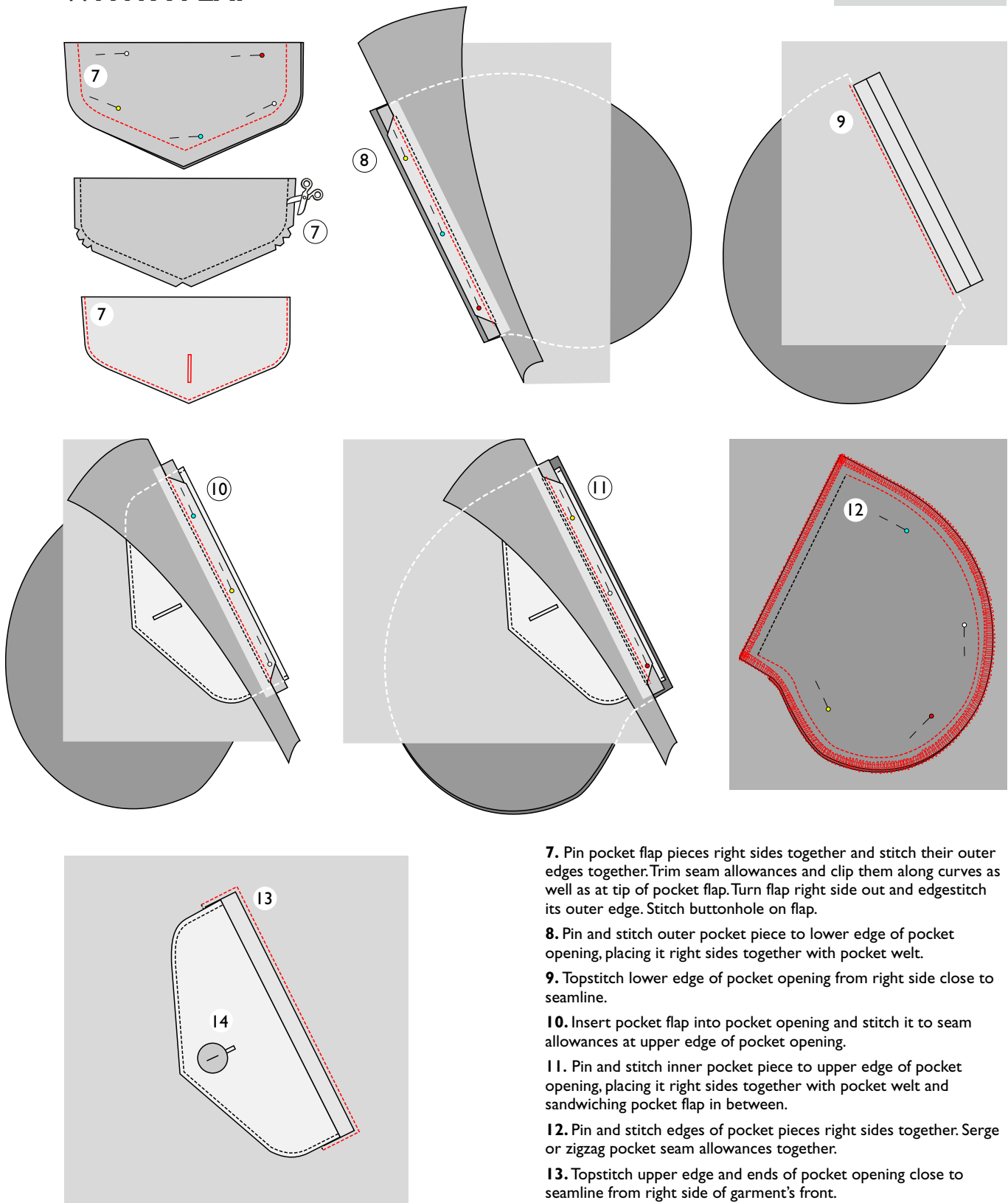
5. Lay garment's front wrong side up and slash pocket opening from wrong side, cutting diagonally to ends of previous rows of stitching to form triangles at ends of pocket opening.

6. Turn edges of pocket opening and welts to wrong side and flip pocket welts in position. Pin and stitch triangles, formed at ends of pocket opening when slashing it, to pocket welts. Press pocket opening.

# OTTOBRE

# DOUBLE-WELT POCKET WITH A FLAP

OTTOBRE design®  
3/2019



**7.** Pin pocket flap pieces right sides together and stitch their outer edges together. Trim seam allowances and clip them along curves as well as at tip of pocket flap. Turn flap right side out and edgestitch its outer edge. Stitch buttonhole on flap.

**8.** Pin and stitch outer pocket piece to lower edge of pocket opening, placing it right sides together with pocket welt.

**9.** Topstitch lower edge of pocket opening from right side close to seamline.

**10.** Insert pocket flap into pocket opening and stitch it to seam allowances at upper edge of pocket opening.

**11.** Pin and stitch inner pocket piece to upper edge of pocket opening, placing it right sides together with pocket welt and sandwiching pocket flap in between.

**12.** Pin and stitch edges of pocket pieces right sides together. Serge or zigzag pocket seam allowances together.

**13.** Topstitch upper edge and ends of pocket opening close to seamline from right side of garment's front.

**14.** Sew button on pocket to match buttonhole on pocket flap.

## © Copyright

The designs, instructions and patterns are only intended for personal use by sewing hobbyists. All commercial or industrial use is prohibited. The designs, instructions, patterns, drawings and photos are protected by copyright laws and the right of reproducing them by any means or in any form is exclusively reserved for the copyright holder. The transferring of the material to a device that can be used for copying it is also regarded as reproduction. All rights reserved.