

DENIM BAG

approx. size 21 cm x 17 cm x 3 cm

MATERIALS

For bag:

- 30 cm black denim
- pink snap fastener, ø 15 mm
- pink thread for topstitching

For one frayed-edge patch:

- 12 cm x 12 cm piece of black denim
- 12 cm x 12 cm piece of patterned fabric, e.g. cotton poplin or velvet
- piece of water-soluble embroidery stabilizer, Vlieseline® Soluweb
- piece of tear-away backing, Vlieseline® Stickvlies
- contrast-color embroidery thread for topstitching

PATTERNPIECES

cut

1A+1B bag	2
2 pocket	1
3A+3B shoulder strap	1
☞ heart	
☞ flower	
☞ star	

ABOUT PATTERN PIECES

Trace pattern pieces on tissue paper observing markings on small-scale patterns. Join pattern pieces 1A and 1B as well as 3A and 3B.

All pattern pieces include seam allowances (1 cm).

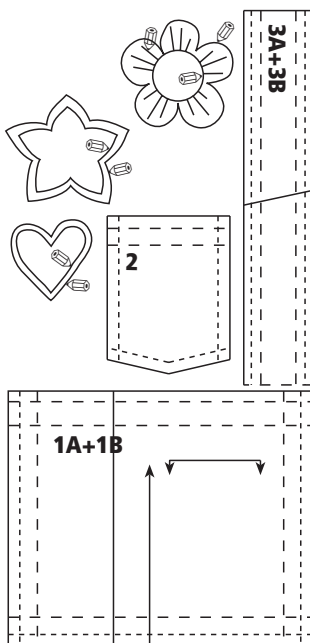
FRAYED-EDGE PATCH

INSTRUCTIONS

1. Lay piece of patterned fabric under piece of denim, with right side of patterned fabric facing wrong side of denim.

2. Trace **stitching lines** of flower, star or heart motif on water-soluble embroidery stabilizer with water- or air-soluble pen. Pin embroidery stabilizer on top of fabrics, to right side of denim, and pin piece of tear-away backing under fabrics. Sew topstitching using contrast-color embroidery thread. Sew outer topstitching with reinforced straight stitch and inner topstitching with decorative stitch.

3. Remove tear-away backing and wash embroidery stabilizer off by dabbing it with piece of cloth moistened with water.



4. Trim off excess seam allowance on patterned fabric from wrong side, cutting close to outer topstitching. Trim edges of denim shape, leaving approx. 7 mm seam allowance for frayed edges.

5. Pierce denim in the middle of patch carefully with sharp-pointed scissors or seam ripper and cut center of shape off, cutting approx. 7 mm from inner topstitching. Take care not to cut patterned fabric underneath.

6. Fray outer and inner edges of patch with seam ripper.

BAG

CUTTING

Cut bag panels from denim as indicated on list of pattern pieces.

SEAMS AND HEMS

Stitch seams with straight stitch and finish them with serger or zigzag stitch. Double-topstitch edges of pocket and top edge of bag. Sew topstitching with contrast-color thread (pink).

JOINING

Press and stitch hem at opening edge of pocket. Turn seam allowances on other edges of

pocket under and press. Pin pocket to right side of one bag panel as marked on pattern and double-topstitch it in place. Attach frayed-edge patches to right side of bag panel as shown in design sketch, securing them at a few places with short backstitching.

Pin bag panels together, right sides facing, and stitch their bottom and side edges together. With bag inside out, stitch bottom corners as follows: lay bottom and side seam on top of each other and sew short row of stitching (3 cm) across corner. Repeat for other corner.

Sew narrow hems (approx. 7 mm + 7 mm) at edges of shoulder strap (finished width of shoulder strap should be 3 cm).

Fold and press hem (1 cm + 2 cm) at top edge of bag. Pin and stitch ends of shoulder strap to top edge of bag at side seams, right sides together. Pin hem at top edge of bag (push shoulder strap inside bag) and double-topstitch it. Turn shoulder strap up and topstitch it to top edge of bag on both sides.

Attach snap fastener as shown in design sketch.

studio
TUUMAT
design factory

Hapsumerkit: jäljennä ommelviivat kirjontaharsolle.

Frayed-edge patches: trace stitching lines on embroidery stabilizer.

Applikationer med råkant: rita av sylinjerna på broderfilm.

Fransensticker: Nahtlinien auf Stickvlies nachzeichnen.

Gerafelde motifjes: trek de stiklijn over op borduurvlies.



1A

laukun yläreunan päärme
hem at top edge of bag
väskans invikning upptill
Saumumschlag der Oberkante der Schultertasche
zoom bovenkant tas

3A

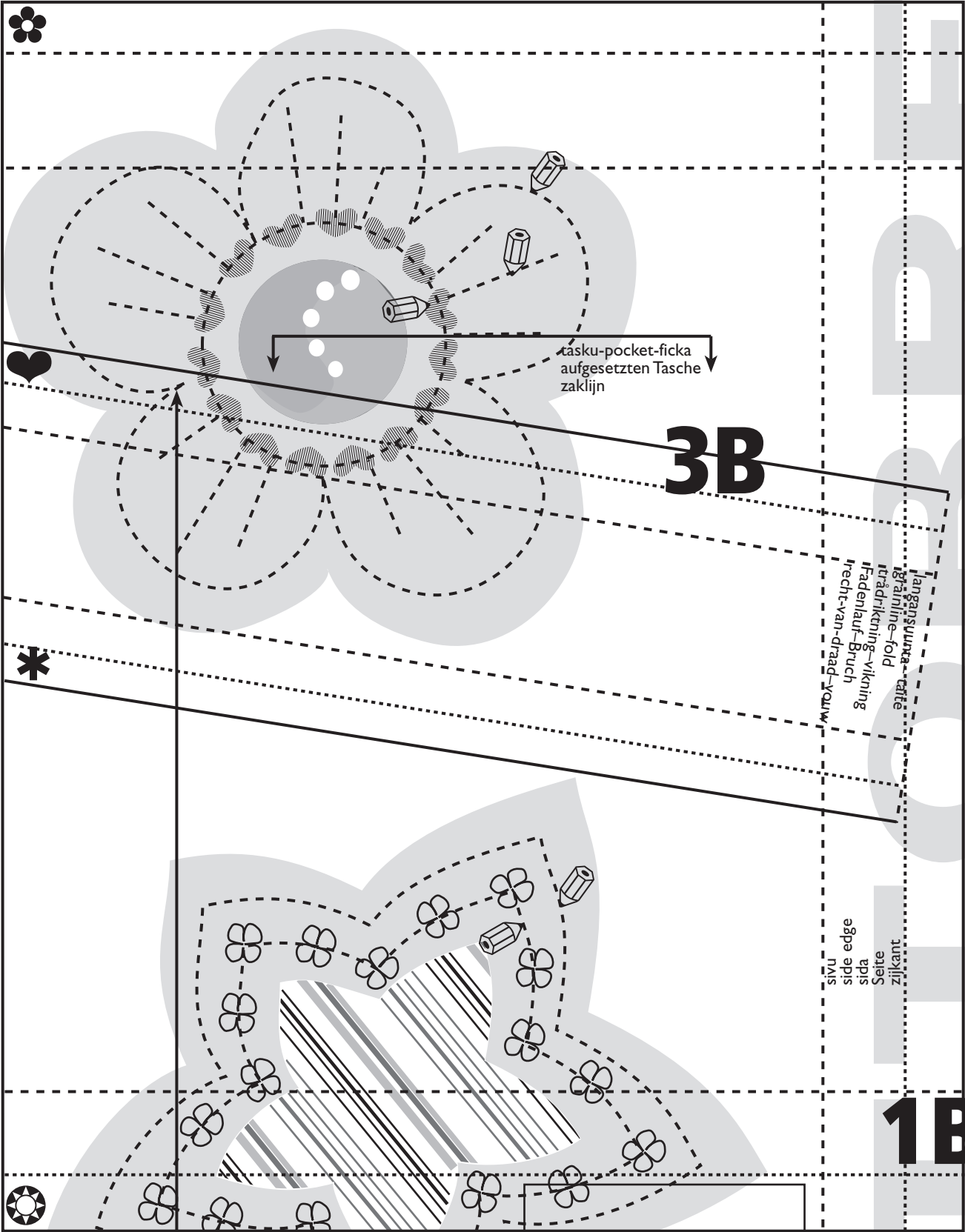
side edge
sida
Seite
zijkant

taskun suun päärme
hem at opening edge of pocket
ficköppningens invikning
Saumumschlag der aufgesetzten tasche
zoom zakopening

2

laukun pohja-bottom of bag
väskbotten-Boden der Tasche
onderkant tas

studio
TUUMAT
design factory



tasku-pocket-ficka
aufgesetzten Tasche
zaklijn

3B

langansuurta - catie
gränline-fold
itradiktning - vikning
fadenlauf - Bruch
recht-van-draad - vouw

sivu
side edge
sida
Seite
zijkant

1B

TARKISTUSRUUTU
CONTROL SQUARE
KONTROLLRUTA
KONTROFFELD
CONTROLEVELD
5 cm x 5 cm

studio
TUUMAT
design factory