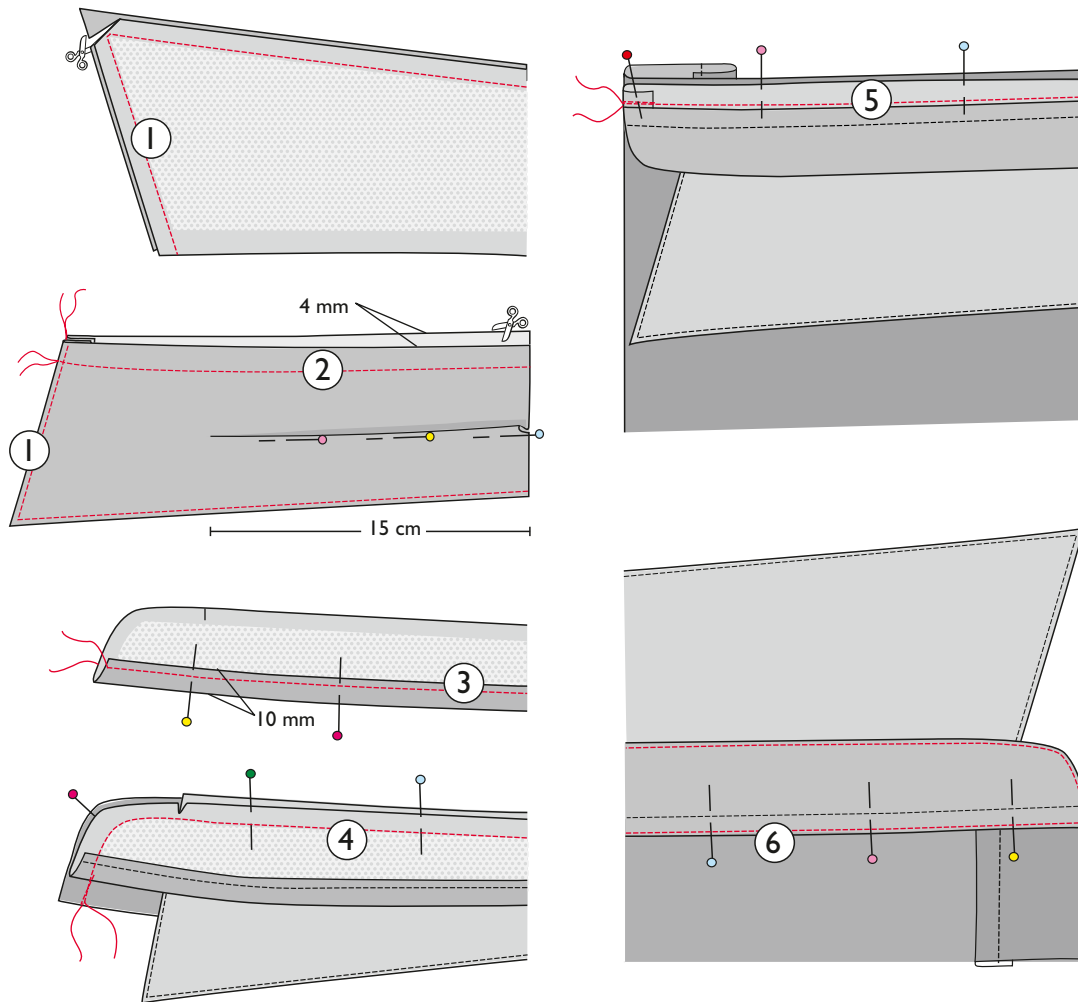


## COLLAR WITH A STAND II

OTTOBRE design®  
7/2019



**1.** Pin collar pieces right sides together and stitch their ends and long outer edges together. Trim seam allowances across corners, press seams open and turn collar right side out. Topstitch around collar close to edge.

**2.** Pin tuck on upper collar as shown in illustration 2, making it 2 mm deep at midpoint of upper collar and tapering it toward both ends of collar. Machine-baste open edges of collar pieces together and trim excess seam allowance on under collar. Thus under collar becomes 4 mm narrower than upper collar, helping the completed collar roll smoothly and stay in its position.

**3.** Turn seam allowance at bottom edge of inner collar stand to wrong side and stitch along edge using presser-foot edge as guide.

**4.** Pin bottom edge of collar to top edge of inner collar stand, with inner collar stand and upper collar right sides together. Pin and stitch inner and outer collar stands right sides

together, sandwiching collar in between. Trim and clip seam allowances around corners.

**5.** Turn collar stand right side out. Pin and stitch bottom edge of outer collar stand to garment's neckline right sides together.

**6.** Pin bottom edge of inner collar stand to neckline carefully and stitch it in place close to edge. Topstitch around collar stand.

### © Copyright

The designs, instructions and patterns are only intended for personal use by sewing hobbyists. All commercial or industrial use is prohibited. The designs, instructions, patterns, drawings and photos are protected by copyright laws and the right of reproducing them by any means or in any form is exclusively reserved for the copyright holder. The transferring of the material to a device that can be used for copying it is also regarded as reproduction. All rights reserved.

# OTTOBRE