

EVENING SONG BIRD MUSIC BOX

OTTOBRE design®
4/2019



MATERIALS

- 30 cm x 35 cm piece of dotted cotton single jersey
- 15 cm x 25 cm piece of white cotton single jersey
- 20 cm x 30 cm piece of natural-white organic-cotton fur knit fabric
- 25 cm x 10 cm piece of natural-color linen fabric
- piece of interfacing, Vlieseline® G 785
- piece of batting, Vlieseline® 277 Cotton
- double-sided fusible web, Vlieseline® Vliesofix
- tear-away backing, Vlieseline® Stickvlies
- white, black and natural-linen color topstitching thread for construction, appliqué and embroidery, Epic n:o 80
- small waterproof music box, Efie.de

PATTERN PIECES

cut

1 body	2
2 wing	2+2
3 feather	2
4 hanging loop	1
5 leg	2+2
6 beak	2
👁️ eye	
👁️ feather trim	

CUTTING

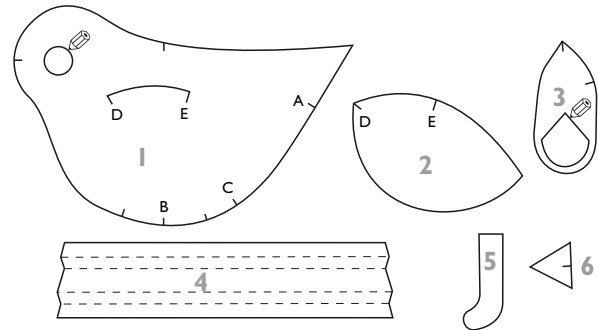
Cut wings from fur knit, body from dotted single jersey, and feather and hanging loop from white single jersey as indicated on list of pattern pieces, adding 10 mm seam allowances to all edges. *Pattern piece for hanging loop includes seam allowances. Cut also two wing pieces from batting, adding 3 mm seam allowances to their edges. Note that the bird's legs and beak are cut later.

SEWING

Construction techniques: Stitch seams with straight stitch, using matching thread for each fabric. No seam finish is necessary as all seam allowances will be concealed within the music box. It's advisable to sew the seams on the bird's body and legs as well as on the hanging loop with two rows of stitching to make the toy durable.

Stabilizing: Fuse interfacing to body pieces and hanging loop.

Bird's eyes, figure 1: Trace two eyes on paper backing of double-sided fusible web and cut them out with generous allowances. Iron pieces of web with eye motifs onto wrong



side of white single jersey and cut eyes out along their outlines. Remove paper backing from eye shapes. Iron eyes onto right side of body pieces as marked on pattern. Pin pieces of tear-away backing to wrong side of body pieces under eye areas. Stitch eyes in place close to edge with straight stitch.

Embroider eyelids and irises on eyes either by hand or with short zigzag stitch in various widths, using black topstitching thread. Remove tear-away backing from wrong side, secure thread ends and steam body pieces.

OTTOBRE

EVENING SONG BIRD MUSIC BOX

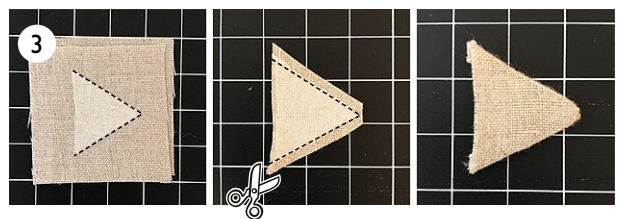
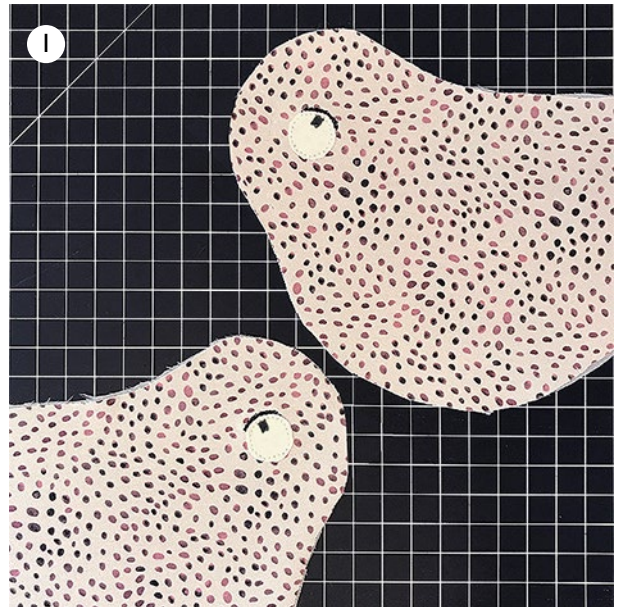
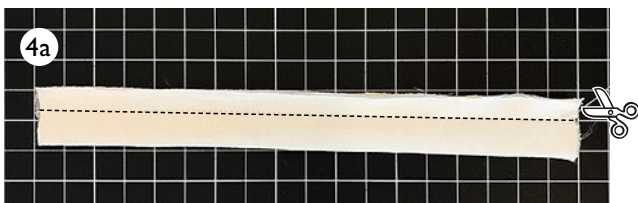
OTTOBRE design®
4/2019

Legs, figure 2: Cut two 10 cm x 10 cm pieces from linen fabric. Place pieces right sides together. Cut two leg patterns from paper and pin them on pieces of linen fabric side by side, leaving at least 5 mm seam allowances around each of them. Stitch outlines of legs with straight stitch along edges of paper patterns. Leave top edges of legs unstitched and backstitch at the start and end of stitching line.

Cut legs out with 5 mm seam allowances, except cut along their top edges without adding seam allowances. Clip seam allowances along curves and finger-press seams open. Turn legs right side out. Cut small strips from batting and stuff the legs with them. Machine-baste top edges of each leg together.

Beak, figure 3: Cut two 5 cm x 5 cm pieces from linen fabric. Cut piece of interfacing using pattern for beak and fuse it to wrong side of one of the pieces of linen fabric. Place pieces of linen fabric right sides together and stitch outlines of beak with short straight stitch. Cut beak out with a few millimeter wide seam allowances. Turn beak right side out and press it flat.

Hanging loop, figures 4a and 4b: Fold hanging loop strip in half lengthwise right sides together and stitch long edges together. Trim seam allowances to 6 mm and press seam open. Turn strip right side out. Press strip flat, placing seam in the middle of strip. Fold strip in half to form hanging loop so that seam is on the inside of loop, then machine-baste its ends together.



EVENING SONG BIRD MUSIC BOX

OTTOBRE design®
4/2019

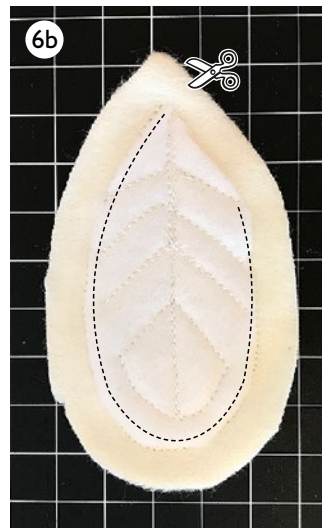
Wings, figure 5: Pin two fur-knit wing pieces right sides together, then pin one batting wing piece to these. Stitch wing pieces together, placing stitching 3 mm in from outer edge of batting and leaving opening for turning between pattern markings. Trim seam allowances all around, trim corners and turn wing right side out. Construct the other wing in the same way. Close openings for turning by hand-stitching.

Feather, figures 6a and 6b: Trace two feather trims on paper backing of double-sided fusible web and cut them out with generous allowances. Iron pieces of web with trim motifs onto wrong side of dotted single jersey and cut trims out along their outlines. Remove paper backing from trims. Iron trims onto right side of feather pieces as marked on pattern. Cut piece of batting and pin feather pieces with trims on it side by side right side up. Stitch trims in place close to edge with straight stitch.

Embroider feather vane on each feather with straight stitch, using white topstitching thread. Secure thread ends carefully. Trim off excess batting along edges of feather pieces. Steam feather pieces from right side.

Pin and stitch feather pieces right sides together, using feather pattern as template for stitching and leaving opening for turning between pattern markings. Trim seam allowances on batting close to stitching and around feather itself to 5 mm. Trim corners and turn feather right side out.

Attaching hanging loop, beak and legs, figure 7: Machine-baste hanging loop, beak and legs to one of the bird's body pieces as marked on pattern, right sides together.



OTTOBRE



Attaching wings, figure 8: Pin and stitch upper edges of wings to body pieces, stitching from pattern marking D to pattern marking E. Use straight stitch and backstitch at both ends of each stitching line.

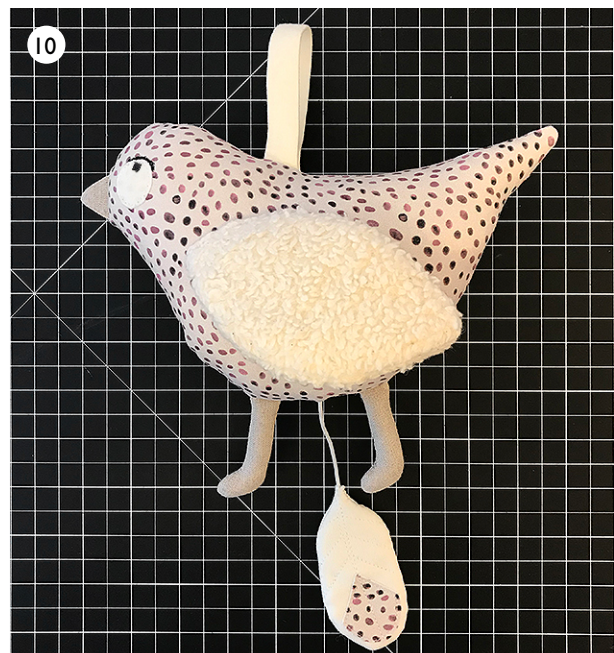
Joining bird's body, figure 9: Pin body pieces right sides together and stitch around body from pattern marking A to pattern marking B with straight stitch, backstitching at both ends of stitching line.

Insert music-box pull string inside bird's body and place it at pattern marking B.

Stitch from pattern marking B to pattern marking C with straight stitch, backstitching at both ends of stitching line and leaving 3 mm wide gap at pattern marking B to allow for free movement of pull string.

Figure 10: Trim seam allowances on bird's body and turn bird right side out. Cut 5 cm wide strips from batting and wrap them around music box to make it feel softer. Cut pieces of batting in various sizes. Place music box inside bird's body and stuff body with pieces of batting until it's firm. Pay attention to the position of the music box to make sure that the bird remains well balanced when hung. Turn in raw edges of opening for turning and close opening by hand-stitching.

Insert the end of music-box pull string inside feather, turn in raw edges of opening for turning and close opening by hand-stitching.



© Copyright

The designs, instructions and patterns are only intended for personal use by sewing hobbyists. All commercial or industrial use is prohibited. The designs, instructions, patterns, drawings and photos are protected by copyright laws and the right of reproducing them by any means or in any form is exclusively reserved for the copyright holder. The transferring of the material to a device that can be used for copying it is also regarded as reproduction. All rights reserved.

© OTTOBRE design® | STUDIO TUUMAT OY |

**EVENING SONG
BIRD MUSIC BOX**

OTTOBRE design®
4/2019

