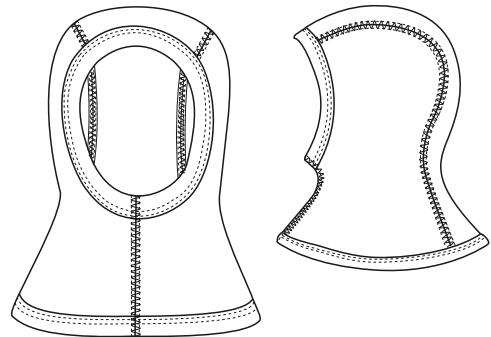


LITTLE TEDDY BALACLAVA HOOD

OTTOBRE design®
4/2019

head circumference 38-40-42-44-46-48-50 cm

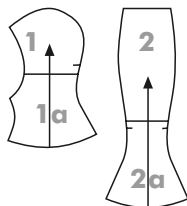


MATERIALS

- 45...50 cm organic-cotton fur knit fabric (CO), width 100 cm, weight 360 g/m², stretch/recovery 10%
- 5 cm ribbing (CO/EL)

PATTERN PIECES

PATTERN PIECES	cut
1+1a side panel	2
2+2a center panel	1



CUTTING

Join pattern pieces 1+1a and 2+2a before cutting. Cut hood pieces from fur knit as indicated on list of pattern pieces, adding 7 mm seam allowances to all edges. Cut 4.5 cm wide binding strips from ribbing for finishing face edge and bottom edge of hood. If you use a binder attachment on your coverstitch machine to attach the bindings, cut the binding strips in the width that fits the binder.

SEWING

Construction techniques: Stitch seams with straight stitch, press them open and topstitch them with 5-thread coverstitch or with suitable decorative stitch on regular sewing machine (e.g. honeycomb stitch). See general instructions for finishing edges with binding on the next page.

Joining: Pin and stitch side panels to center panel. Topstitch seams. Finish face edge and bottom edge of hood with binding. Stitch and topstitch center-front seam. Secure thread ends carefully. Stitch horizontal rows of back-and-forth stitching with straight stitch at both ends of seam.

© Copyright

The designs, instructions and patterns are only intended for personal use by sewing hobbyists. All commercial or industrial use is prohibited. The designs, instructions, patterns, drawings and photos are protected by copyright laws and the right of reproducing them by any means or in any form is exclusively reserved for the copyright holder. The transferring of the material to a device that can be used for copying it is also regarded as reproduction. All rights reserved.

© OTTOBRE design® | STUDIO TUUMAT OY |

OTTOBRE

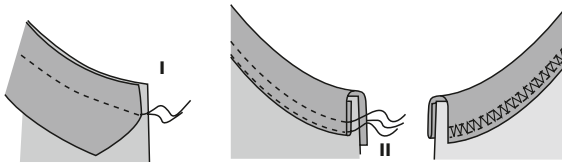
LITTLE TEDDY BALACLAVA HOOD

OTTOBRE design®
4/2019

EDGE FINISH WITH RIBBED BINDING

If you want to attach ribbed binding on a regular sewing machine, use the following method.

1. Measure length of edge to be finished on pattern pieces.
2. Determine length of binding (stretch/recovery of ribbing: 20...30%).
 - Length of binding for face edge = $0.7 \dots 0.75 \times$ length of face edge.
 - Length of binding for bottom edge = $0.90 \times$ length of bottom edge.



Note! As the stretch and recovery qualities of different knits tend to vary, check the required length of binding by experimenting on a piece of scrap fabric before applying binding to the garment.

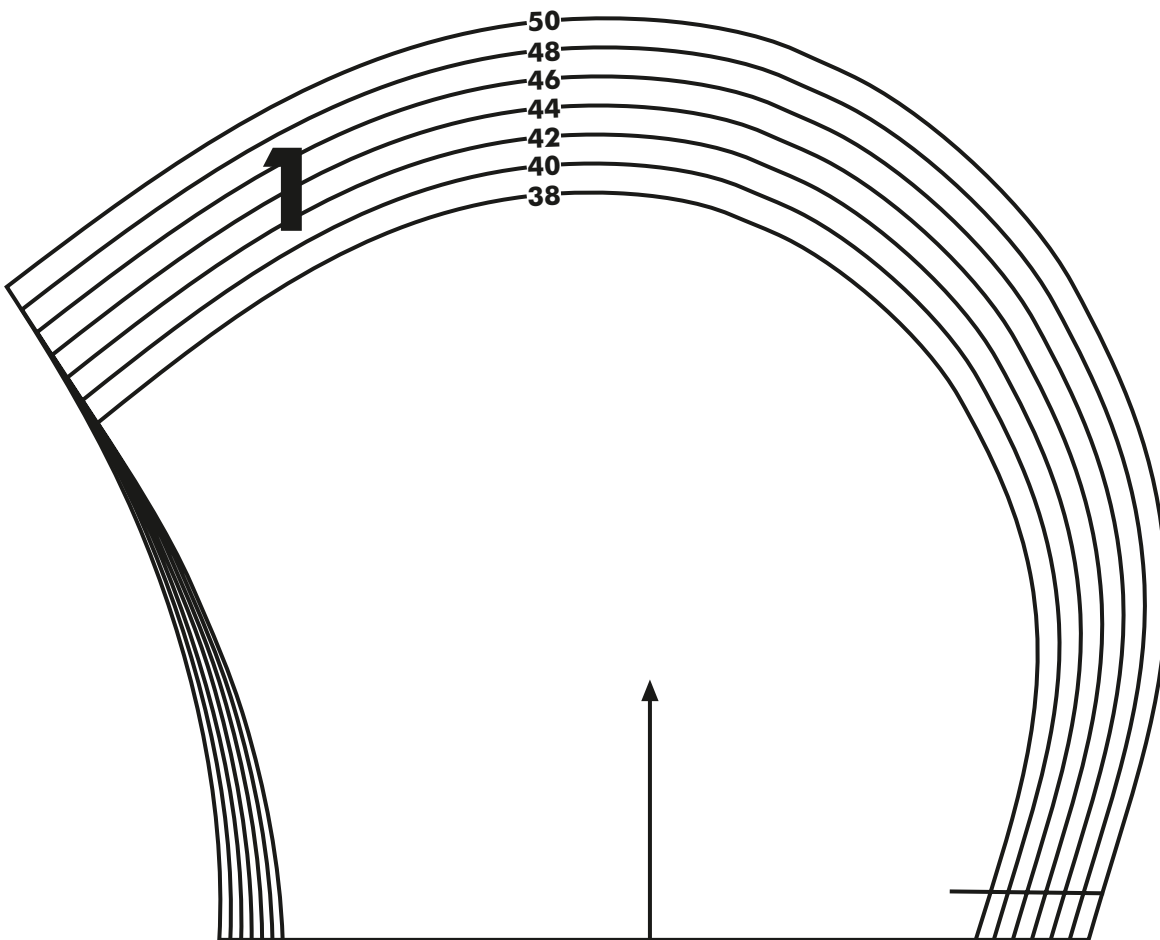
3. Apply binding:

- Mark both binding and edge to be finished into quarters. Stitch one edge of binding to garment's edge right sides together, matching quarter marks and stretching binding along curved portions of garment's edge. Use straight stitch on regular sewing machine, or alternatively stitch with serger.

Stitching I.

- Wrap the other edge of binding over to wrong side and topstitch binding from right side close to seamline, using twin needle stitching. **Stitching II.**

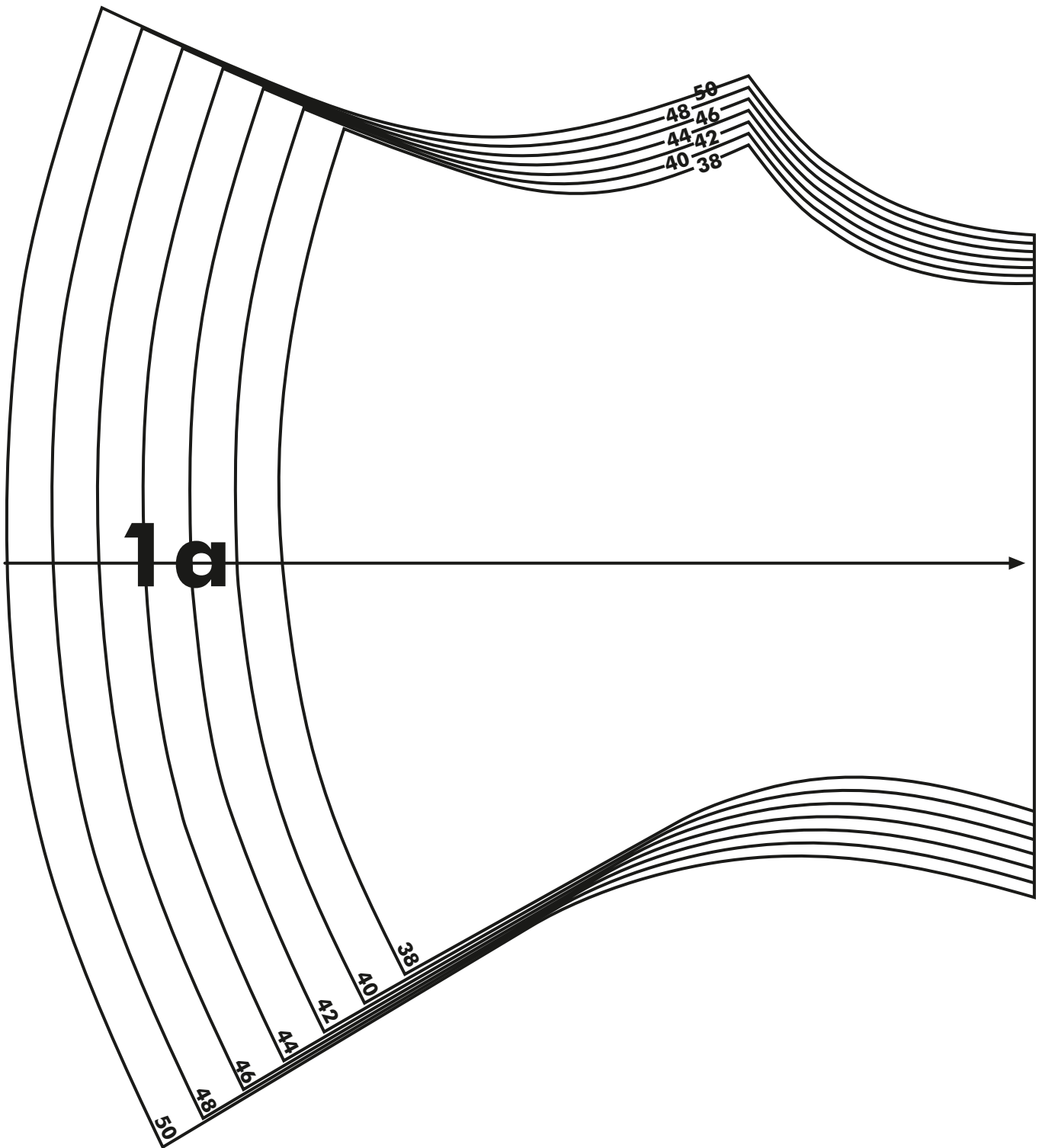
- Trim excess edge of binding carefully on wrong side of garment.



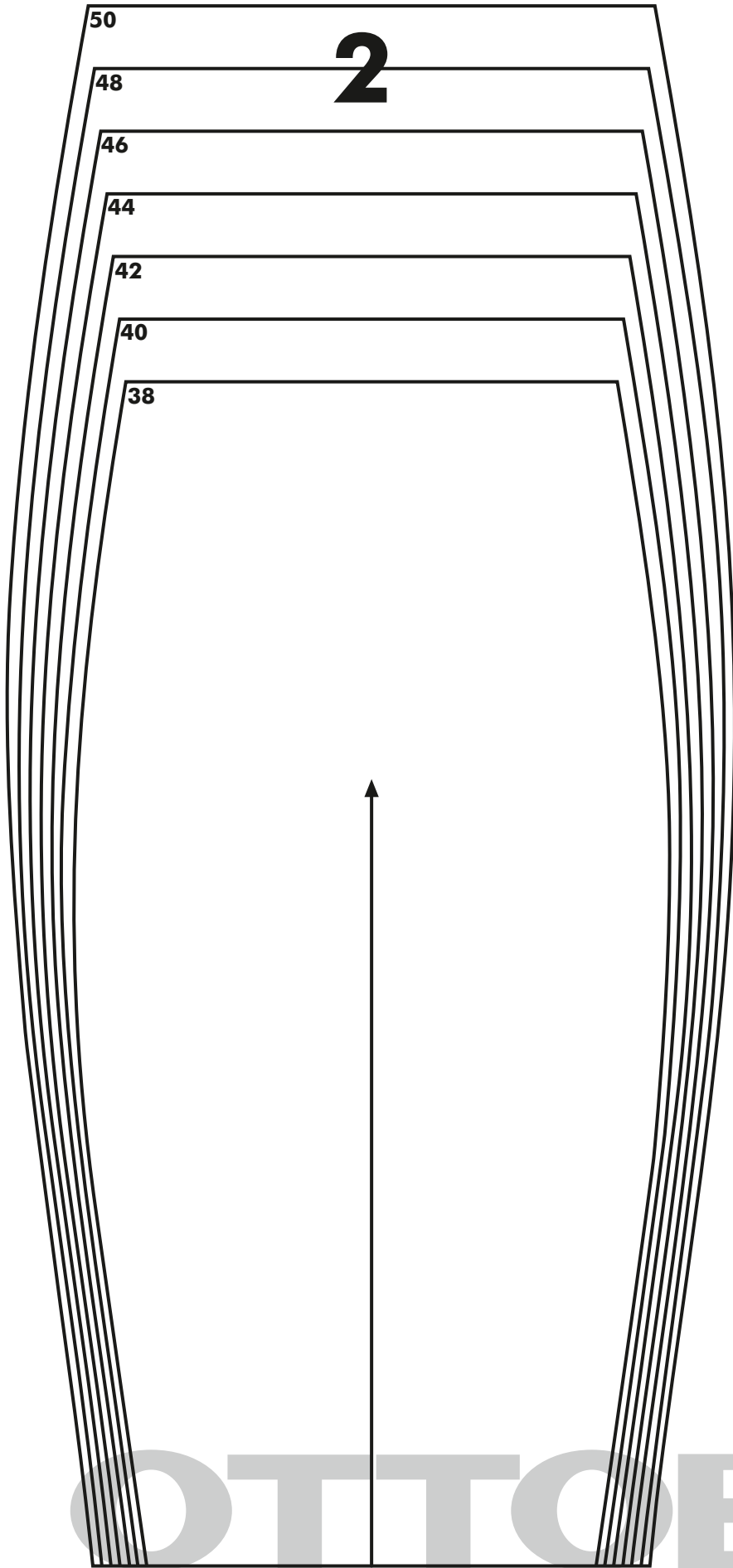
OTTOBRE

LITTLE TEDDY
BALACLAVA HOOD

OTTOBRE design®
4/2019



OTTOBRE



NOTE!

This pattern can be printed out legally only from the OTTOBRE design® website at www.ottobredesign.com or from the OTTOBRE design® online shop at www.etsy.com/shop/ottobredesign. If you have obtained the pattern from some other source, it is likely to be a pirate copy. Please do not share this pattern unlawfully!

The designers of this pattern deserve to be paid for their work just like everyone else. Thank you for respecting our copyrights and thus enabling us to continue our work.

Copyright ©
OTTOBRE design®
STUDIO TUUMAT OY
FINLAND

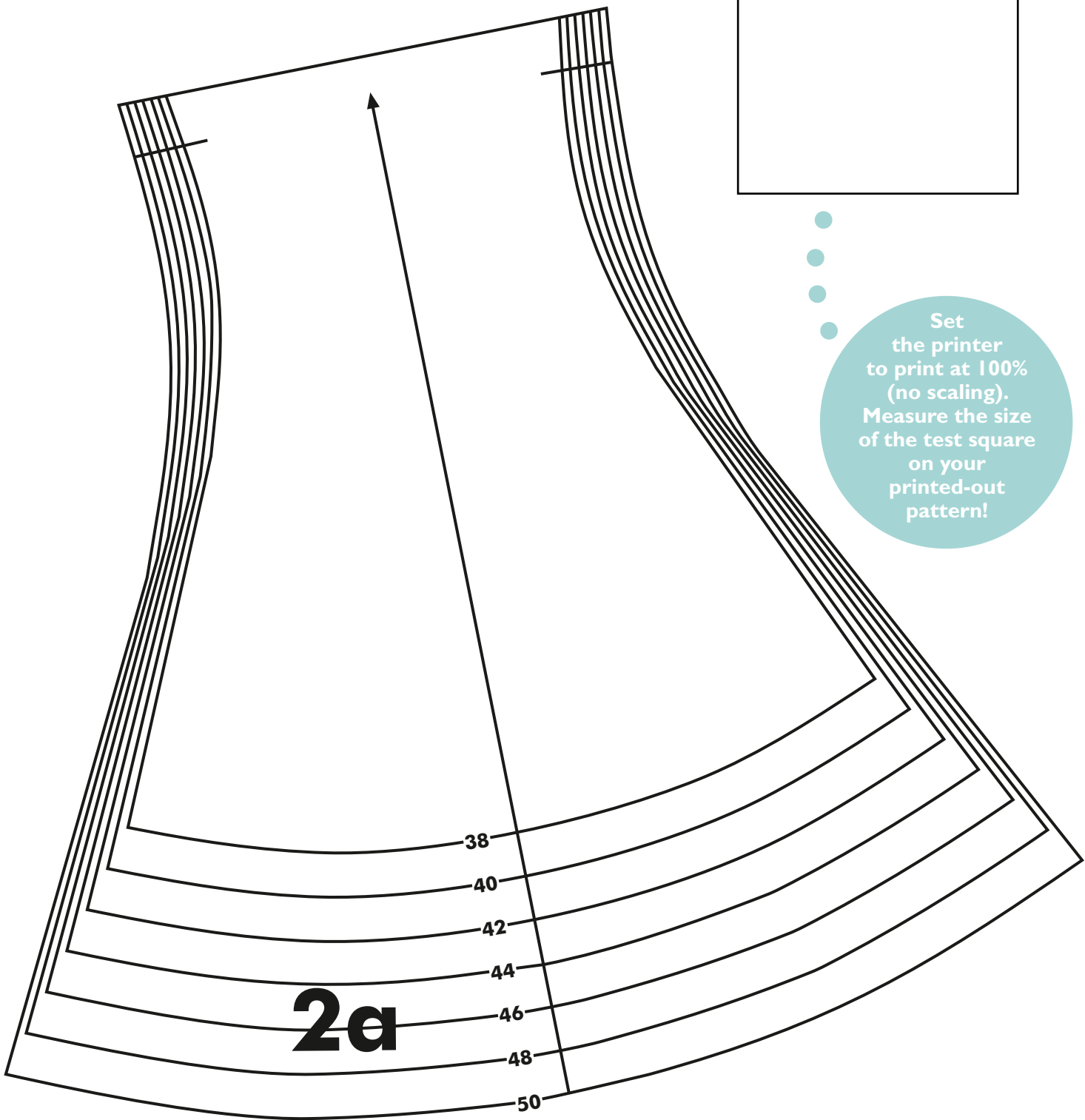
OTTOBRE

**LITTLE TEDDY
BALACLAVA HOOD**

OTTOBRE design®
4/2019

TEST SQUARE
5 x 5 cm

Set
the printer
to print at 100%
(no scaling).
Measure the size of the test square
on your
printed-out
pattern!



OTTOBRE