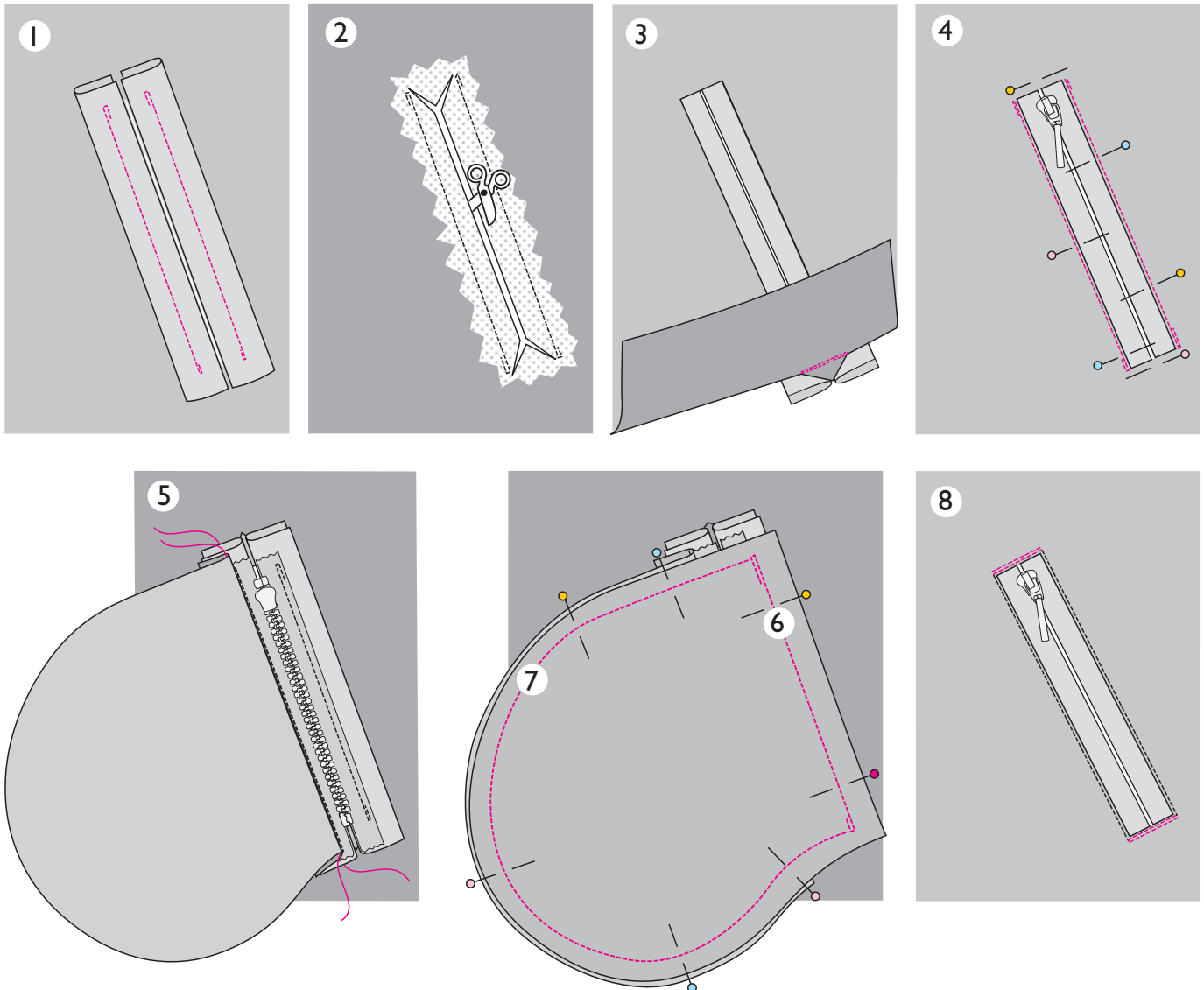


# ZIPPERED DOUBLE-WELT POCKET III

OTTOBRE design®  
1/2020



**1.** Mark placement of pocket opening on right side of garment's front panel. Fold pocket welts in half lengthwise wrong sides together and press creases.

Pin folded welts on either side of marking for pocket opening, aligning their open edges with marking, and stitch along the middle of welts, starting and ending stitching 10 mm away from their ends.

**2.** Slash pocket opening between stitching lines from wrong side and clip diagonally to ends of stitching lines to form triangles at ends of pocket opening.

**3.** Turn edges of pocket opening and welts to wrong side and flip welts in position. Stitch triangles, formed at ends of pocket opening when slashing it, to ends of welts. Press pocket opening.

**4.** Pin zipper right side up under pocket welts, on wrong side of pocket opening, and stitch it to edges of pocket opening from right side, stitching close to seamlines that attach welts. Use zipper foot for stitching.

**5.** Stitch outer pocket piece to seam allowance of pocket welt on center-front side of pocket opening right sides together, sandwiching zipper tape in between.

**6.** Stitch inner pocket piece to seam allowance of side-seam side pocket welt right sides together.

**7.** Pin and stitch edges of pocket pieces right sides together.

**8.** Topstitch ends of pocket opening to pocket pieces through all layers from right side of pocket opening.

© OTTOBRE design® | STUDIO TUUMAT OY

The designs, instructions and patterns are only intended for personal use by sewing hobbyists. All commercial or industrial use is prohibited. The designs, instructions, patterns, drawings and photos are protected by copyright laws and the right of reproducing them by any means or in any form is exclusively reserved for the copyright holder. The transferring of the material to a device that can be used for copying it is also regarded as reproduction. All rights reserved.

# OTTOBRE