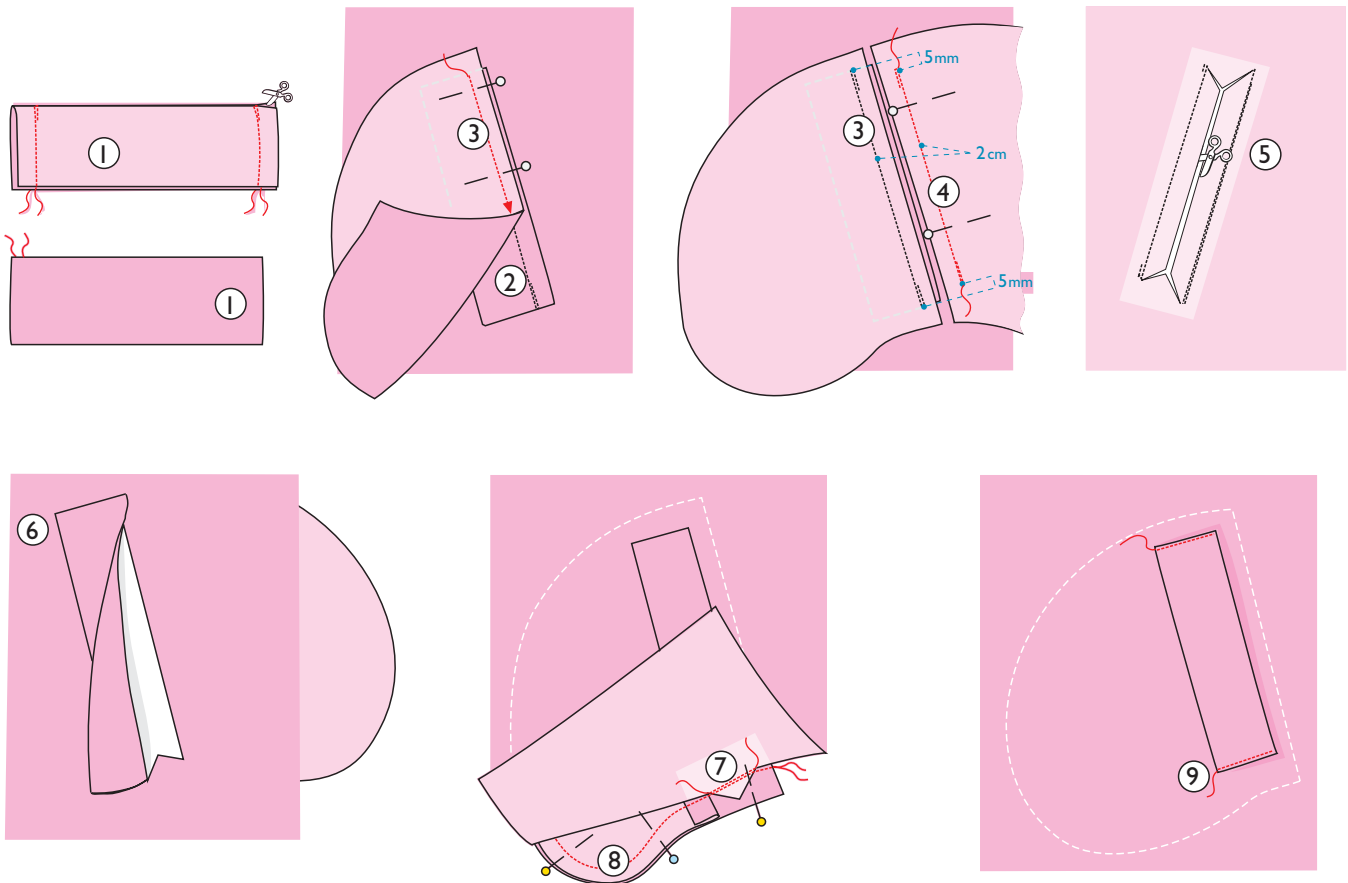


# WELT POCKET IV

OTTOBRE design®  
5/2018, design 19



## WELT POCKET IV

*This pocket is suitable for garments made from medium-weight cotton fabric. The pocket welt and the inner pocket piece are cut from the fashion fabric, and the outer pocket piece is cut from cotton poplin, used for the lining of the garment.*

Mark placement of pocket opening on front panel observing pattern markings. Fuse interfacing to wrong side of front panel over marked pocket opening as well as to outer half of pocket welt. See areas shaded in grey on small-scale patterns.

1. Fold pocket welt in half right sides together and stitch its ends. Clip corners and turn welt right side out. Press edges of welt.
2. Place open edge of welt along pattern marking for pocket opening, with interfaced half of welt against right side of front panel, and stitch in place.
3. Pin outer pocket piece on top of welt right sides together and stitch along previous row of stitching.

4. Pin and stitch inner pocket piece to the opposite side of pattern marking for pocket opening right sides together, so that the distance between the two rows of stitching along pocket opening is 2 cm. **Note!** The row of stitching that attaches inner pocket piece should at each end be 5 mm shorter than pocket welt.

5. Slash pocket opening from wrong side and clip diagonally to stitching at corners.
6. Fold pocket pieces to wrong side.
7. Stitch triangles, formed at ends of pocket opening when slashing it, to inner pocket piece right sides together.
8. Pin and stitch edges of pocket pieces right sides together.
9. Press pocket opening. Pin ends of pocket welts in position and topstitch them in place through all layers close to edge.

# OTTOBRE