

POCKET FOR A JERSEY GARMENT

OTTOBRE design®
1/2022

I

Designs 1, 4 and 14

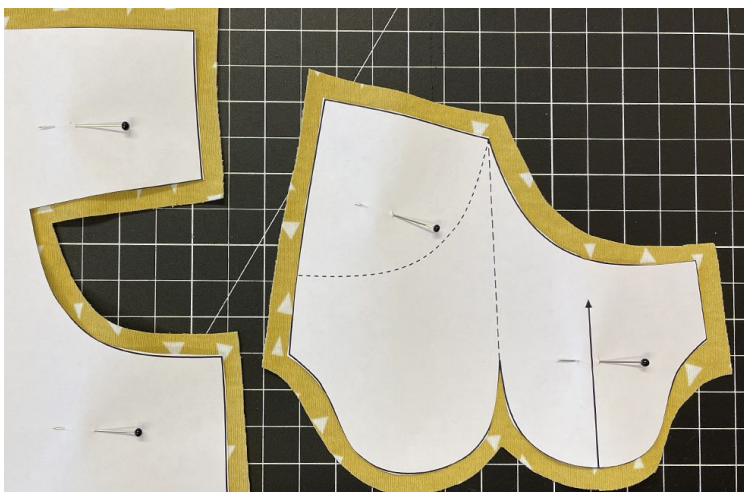


Stitch pocket with straight stitch and finish seam allowances along straight upper edge of pocket opening and at bottom of pocket with serger or zigzag stitch.

For reasons of clarity, no serger or zigzag finish is shown in the pictures!

© OTTOBRE design®
STUDIO TUUMAT OY

The designs, instructions and patterns are only intended for personal use by sewing hobbyists. All commercial or industrial use is prohibited. The designs, instructions, patterns, drawings and photos are protected by copyright laws and the right of reproducing them by any means or in any form is exclusively reserved for the copyright holder. The transferring of the material to a device that can be used for copying it is also regarded as reproduction. All rights reserved.



Cut garment pieces from jersey knit as indicated on list of pattern pieces, adding 1 cm seam allowances to all edges.

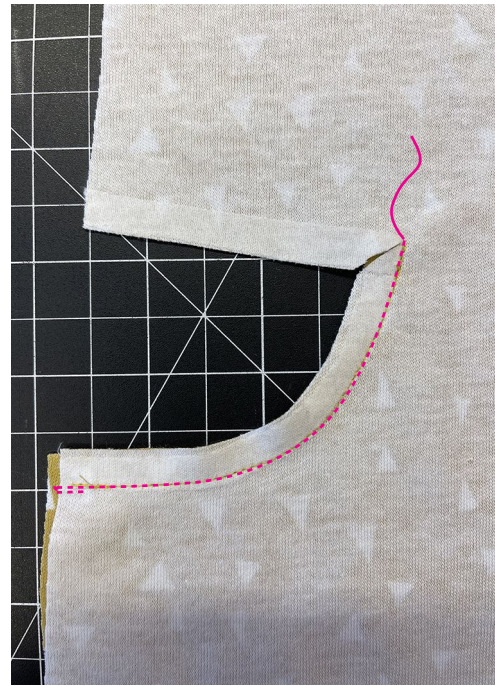
Fuse narrow strips of interfacing to seam allowances at edges of pocket opening on romper front (design 1), on pants front (design 4) or on front panel (design 14).

OTTOBRE

© OTTOBRE design® by STUDIO TUUMAT OY | ottobre@ottobre.fi | www.ottobredesign.com



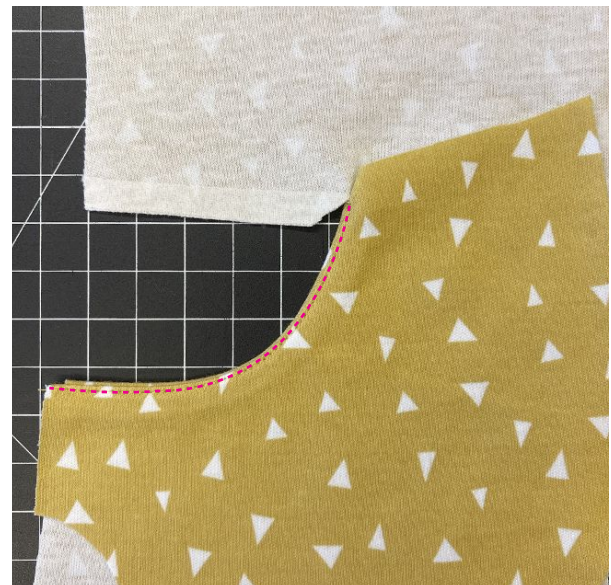
1. Pin pocket bag to romper front/pants front/front panel right sides together and stitch curved edge of pocket opening. Start stitching 1 cm away from raw edge of pocket bag.



2. Clip through seam allowance at corner of pocket opening diagonally at 45° angle to end point of stitching line.



3. Fold seam allowances along curved edge of pocket opening to pocket bag and understitch them to pocket bag close to seamline.



Fold pocket bag to wrong side.

OTTOBRE



4. Fold pocket bag right sides together and stitch bottom of pocket.



5. In order to be able to stitch straight upper edge of pocket opening, fold romper front/pants front/front panel right sides together along the dashed line marked in the picture.



6. Pin and stitch upper edge of pocket opening to upper edge of pocket bag right sides together. Start stitching along curved edge of pocket opening, 1 cm away from the corner of pocket opening. Serge or zigzag seam allowances together.



7. Machine-baste side edge of pocket bag to side seam allowance of front panel/romper front.

OTTOBRE