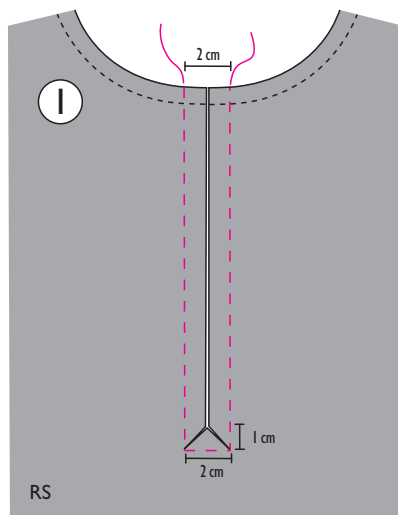


## FRONT PLACKET FOR A SHIRT WITHOUT A COLLAR

OTTOBRE design®  
6/2020

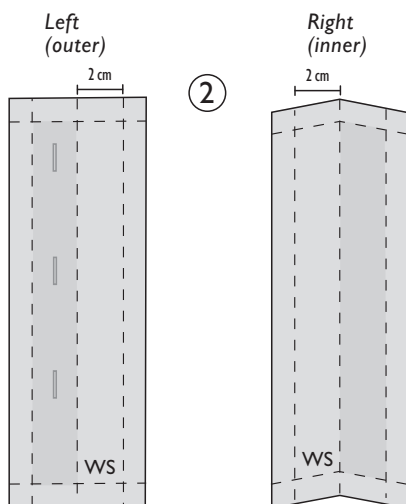
Before constructing the placket, the placket opening on the garment has been slashed for 4 cm starting from the neckline and the neckline has been finished with a bias-cut facing. This placket tutorial has been designed for a garment sewn from lightweight cotton or linen fabric (e.g. double gauze fabric, poplin or linen chambray).

Transfer pattern markings for placket on front panel and sew guide stitching around marked placket opening along dashed line. Cut button bands and stitch placket with even 10 mm seam allowances. The terms "inner"/"outer" and "left"/"right" refer to the garment when worn.



**When making a placket on design 3 or 29 in issue 6/2020, use the button band pattern that is printed on page 4 of this tutorial instead of the pattern on the magazine pattern sheet. Print the pattern out on A4-size or Letter-size paper. Make sure that the print scaling is set to 100%.**

**1.** Slash placket opening along center-front line to within 10 mm from bottom of placket. Clip diagonally into corners of guide stitching to form a triangle at bottom of placket.

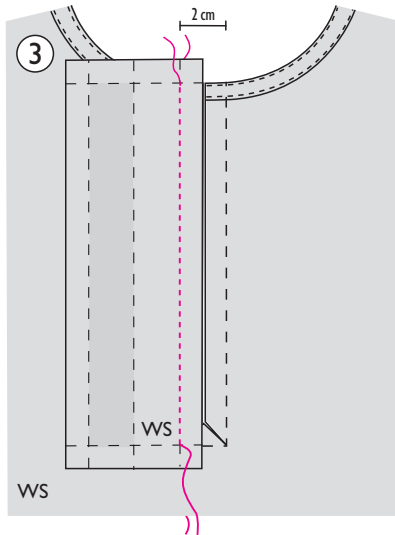


**2.** Fuse interfacing to wrong side of outer halves of button bands. Fold button bands in half lengthwise and press creases.

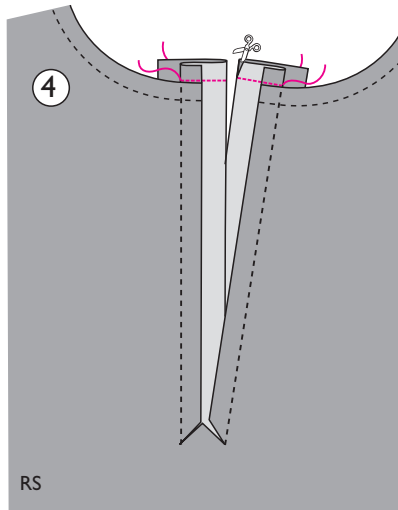
© OTTOBRE design® | STUDIO TUUMAT OY  
The designs, instructions and patterns are only intended for personal use by sewing hobbyists. All commercial or industrial use is prohibited. The designs, instructions, patterns, drawings and photos are protected by copyright laws and the right of

reproducing them by any means or in any form is exclusively reserved for the copyright holder. The transferring of the material to a device that can be used for copying it is also regarded as reproduction. **All rights reserved.**

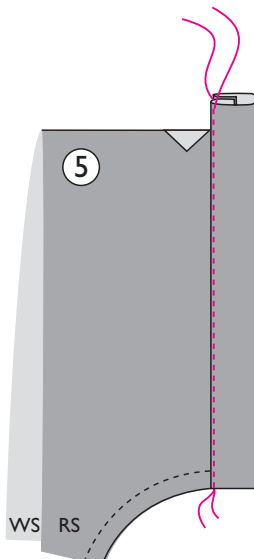
# OTTOBRE



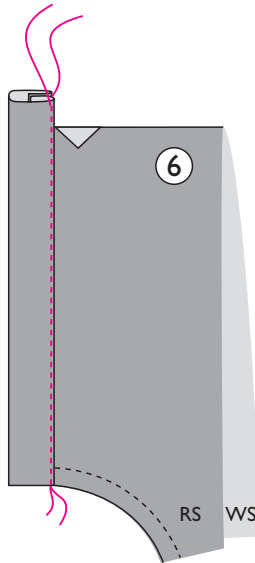
**3.** Pin left side of non-interfaced half of left button band to wrong side of left placket edge on front panel. Stitch button band to placket edge, ending stitching 10 mm above bottom end of button band. Stitch right button band to right placket edge in the same way.



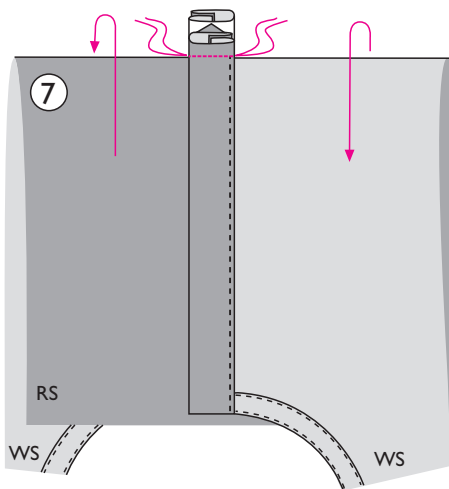
**4.** Fold each button band in half right sides together and stitch top ends of bands. Clip through seam allowance along band foldline at top corner of each band. Turn top ends of bands right side out.



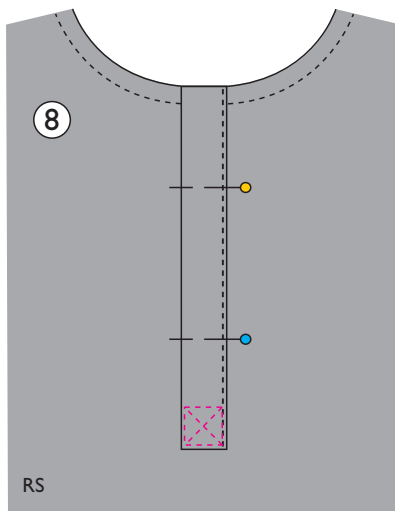
**5.** Fold left button band right way up. Turn seam allowance at edge of outer (= interfaced) half of button band to wrong side, pin edge to right side of placket edge and stitch it in place close to edge, continuing stitching to bottom end of band (flip right placket edge out of the way as you stitch). Note that bottom end of button band is left unstitched at this stage.



**6.** Stitch outer half of right button band to right placket edge in the same way. The triangle, formed when slashing the placket opening, remains unstitched at this stage.



**7.** Fold front panel cross-wise along bottom of placket, folding left (= outer) placket edge onto right side and right (= inner) placket edge onto wrong side of lower portion of front panel, then sandwich triangle at bottom of placket between bottom ends of button bands and stitch it to button bands.



**8.** Fold button bands right way up, pin them in position and press placket. Stitch a square at bottom of placket from right side. If you wish, stitch two rows of stitching within square diagonally from corner to corner to form a crisscross pattern.

TARKISTUSRUUTU  
CONTROLEVIERKANTJE  
TESTQUADRAT  
TEST SQUARE  
KONTROLLRUTA  
CUADRADO DE CONTROL  
CARRÉ DE CONTRÔLE

5 cm x 5 cm

When making a placket on design 3 or 29 in issue 6/2020,  
use these corrected patterns for the button bands!

OTTOBRE design®  
6/2020, design 29

OTTOBRE design®  
6/2020, design 3

