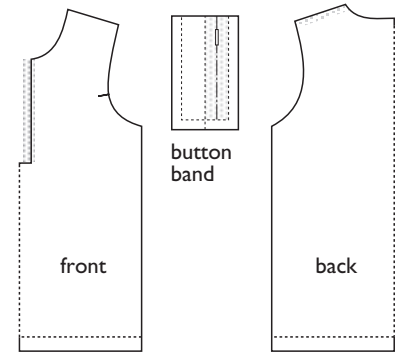


EASY NECKLINE PLACKET

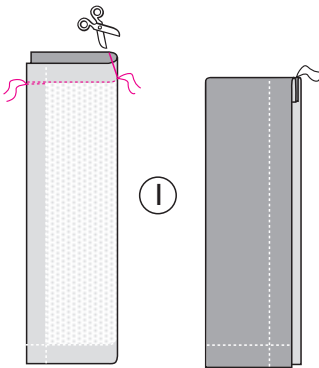
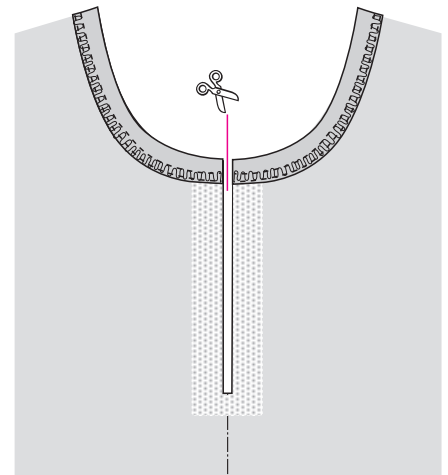
OTTOBRE design®
design 3 6/2021



Stabilizing: Fuse interfacing to button bands and along edges of placket opening (or over pattern marking for placket opening) on front panel; measure required lengths of interfacing strips on pattern pieces. See areas shaded in grey on small-scale patterns.

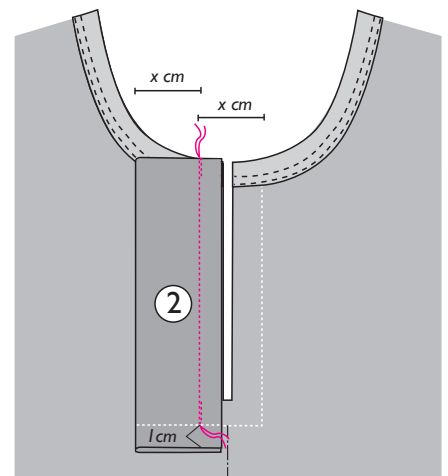


If applicable, slash placket opening on front panel for a few centimeters starting from neckline. Stitch garment's shoulder seams and finish neckline with binding before constructing placket.



1. Fold button band in half lengthwise right sides together and stitch its upper end. Trim corner and turn button band right side out. Construct the other button band in the same way.

2. Pin and stitch button band to right side of front panel along left edge of placket opening; end stitching 10 mm before lower end of button band. Stitch the other button band to right edge of placket opening in the same way. Note that the distance between the stitching lines should be the width of the visible part of the finished button band (x cm).



© OTTOBRE design® | STUDIO TUUMAT OY

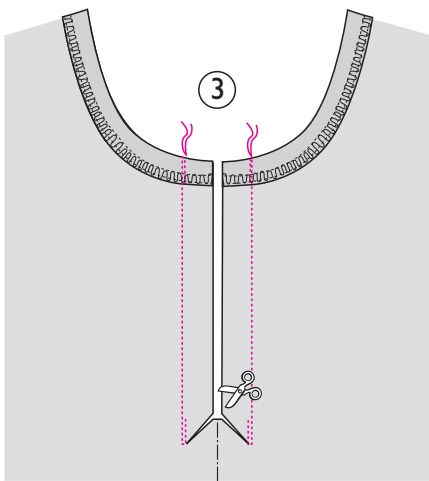
The designs, instructions and patterns are only intended for personal use by sewing hobbyists. All commercial or industrial use is prohibited. The designs, instructions, patterns, drawings and photos are protected by copyright laws and the right of

reproducing them by any means or in any form is exclusively reserved for the copyright holder. The transferring of the material to a device that can be used for copying it is also regarded as reproduction. **All rights reserved.**

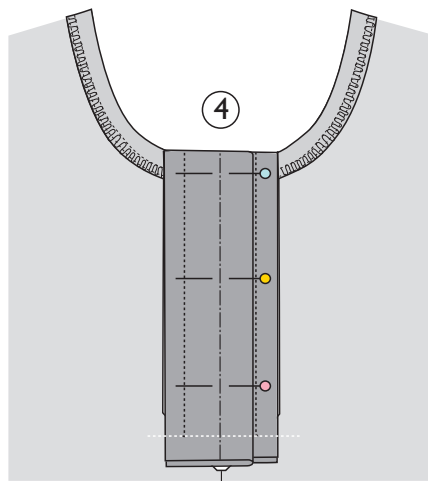
OTTOBRE

© OTTOBRE design® | STUDIO TUUMAT OY | ottobre@ottobre.fi | www.ottobredesign.com

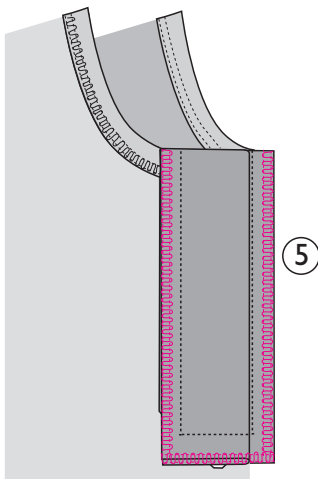
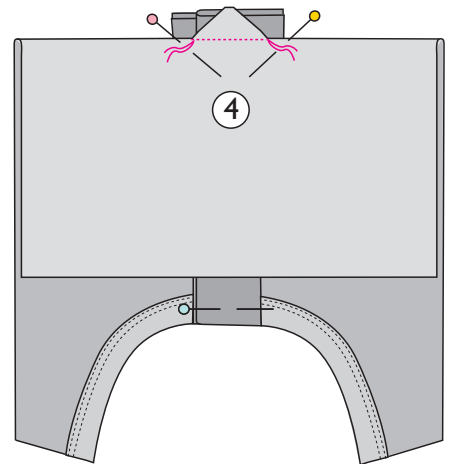
EASY NECKLINE PLACKET



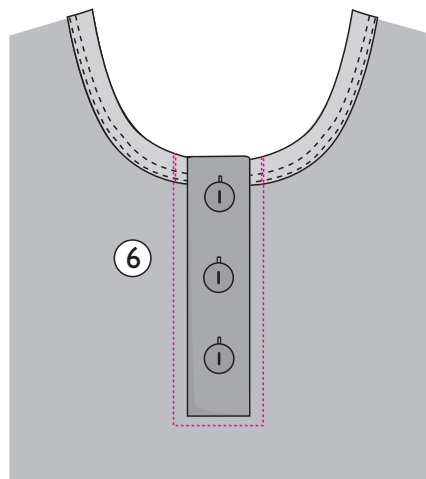
3. If applicable, slash placket opening to within 10 mm of bottom ends of stitching lines. Clip diagonally through seam allowances to ends of stitching lines at bottom of placket.



4. Overlap button bands and pin them in position. Fold front panel crosswise right sides together along bottom of placket and stitch triangle, formed at bottom of placket when slashing it, to lower ends of button bands.



5. Serge or zigzag seam allowances around placket together.



6. Turn seam allowances around placket toward front panel and topstitch around placket using presser-foot edge as guide. Stitch three buttonholes on outer button band and sew buttons on inner button band, or attach snap fasteners to placket.

OTTOBRE