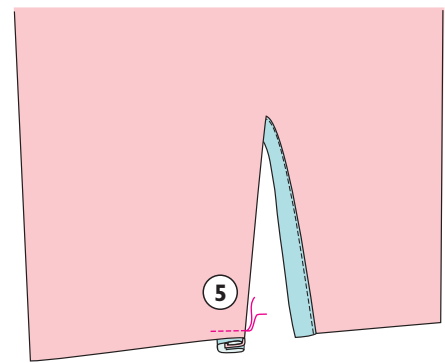
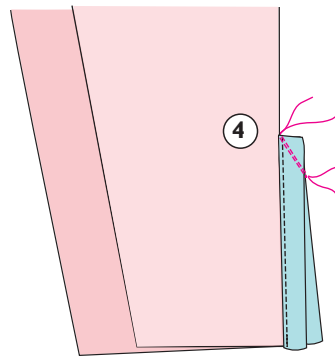
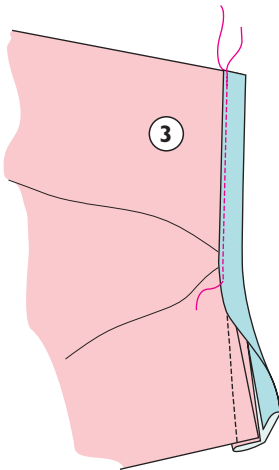
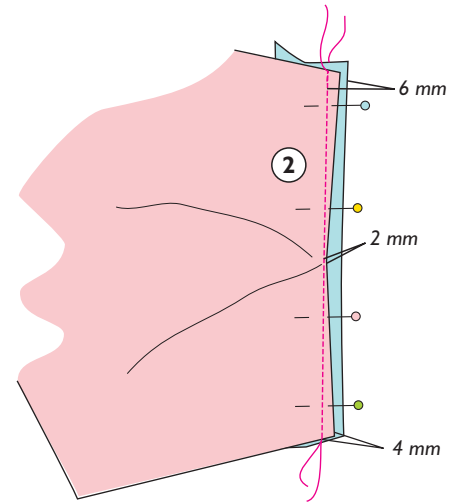
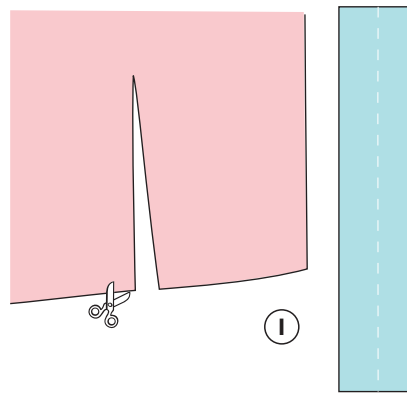


DELICATE CUFF PLACKET

- Right side of fabric
- Wrong side of fabric
- Cuff placket binding



1. Slash placket opening on sleeve as marked on pattern.

2. Pin right side of placket binding to wrong side of sleeve along placket opening. Stitch one edge of binding to edge of placket opening, leaving even 6 mm seam allowance all along edge of binding while stitching 4 mm away from placket edge at bottom edge of sleeve and gradually reducing seam allowance to 2 mm at top end of placket.

Press seam allowances toward placket binding with point of iron.

3. Fold the other edge of binding to right side, turn its seam allowance under and stitch turned-under edge to placket edge close to edge.

4. Place placket edges right sides together and stitch small dart on placket binding at top end of placket.

(5. If applicable fold one placket edge to wrong side and machine-baste it in position.)

© OTTOBRE design® | STUDIO TUUMAT OY

The designs, instructions and patterns are only intended for personal use by sewing hobbyists. All commercial or industrial use is prohibited. The designs, instructions, patterns, drawings and photos are protected by copyright laws and the right of

reproducing them by any means or in any form is exclusively reserved for the copyright holder. The transferring of the material to a device that can be used for copying it is also regarded as reproduction. **All rights reserved.**

OTTOBRE