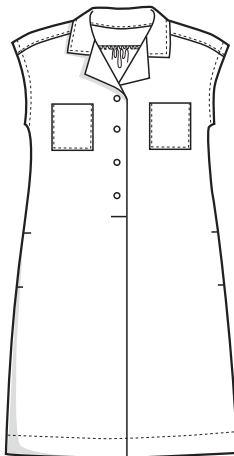
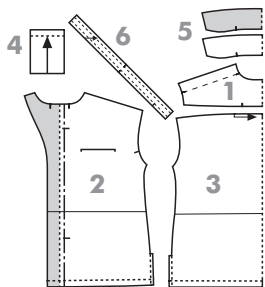


CONVERTIBLE COLLAR



OTTOBRE design® 2/2023

1. Many Faces cap sleeve blouse

6. Kilimanjaro shirt dress



CUTTING

Cut collar pieces from fabric as indicated on list of pattern pieces, placing center-back edge of pattern piece on fabric fold and adding 10 mm seam allowances to upper collar and 8 mm seam allowances to under collar. Stitch the collar with 10 mm seam allowances, stretching the under collar slightly to make the collar sit nicely at the neckline.

Copy pattern markings for center-back points on collar pieces, as well as markings for points to be matched with yoke seams on attachment edges (= lower edges) of collar pieces, by cutting approx. 3 mm deep clips into seam allowances. Mark center-front and center-back points as well as points for ends of collar at garment's neckline by cutting clips into neckline seam allowance.

STABILIZING

Fuse interfacing to upper collar and to front facings on front panels (see areas shaded in grey on small-scale patterns). Fold front facings to wrong side of front panels as marked on pattern and press creases. Serge or zigzag raw outer and shoulder edges of front facings. Fold and stitch narrow hems along outer edges of front facings.

SEWING

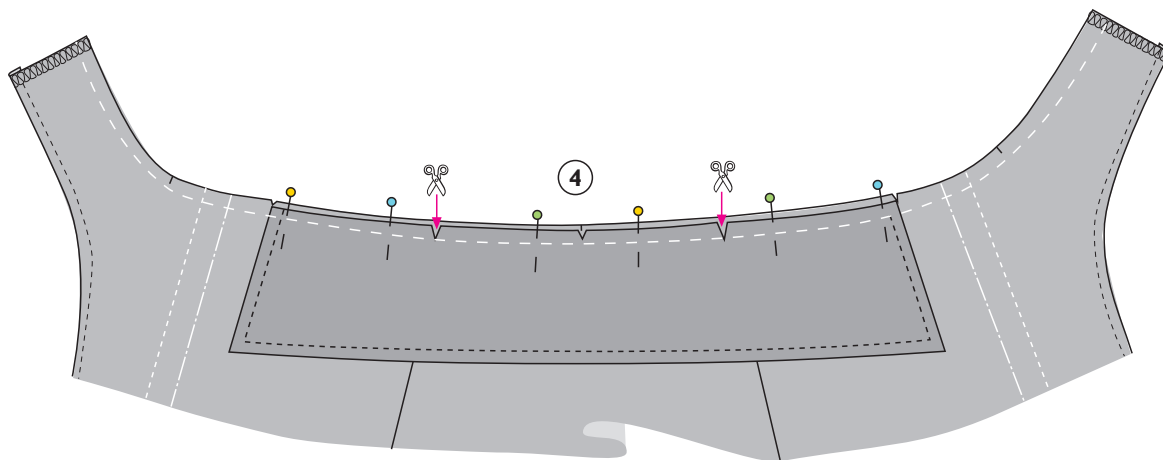
1a. Pin collar pieces right sides together and stitch their long outer edges together.

1b. Understitch seam allowances to under collar close to seamline.

2. Fold collar pieces right sides together and stitch ends of collar. Trim seam allowances across corners.

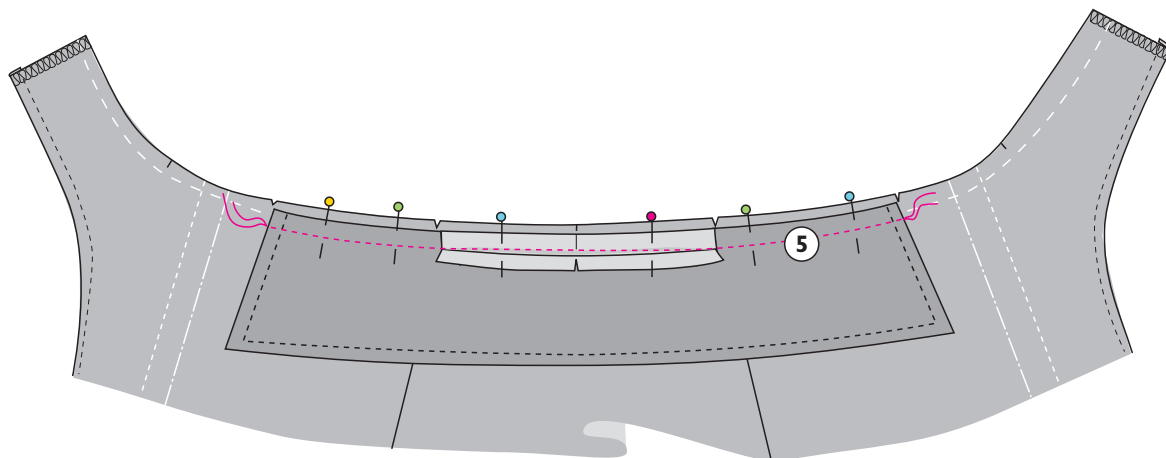
3. Turn collar right side out. Check that corners of collar are accurate. Press collar flat gently. Topstitch outer edge and ends of collar either close to edge or using presser-foot edge as guide.

OTTOBRE

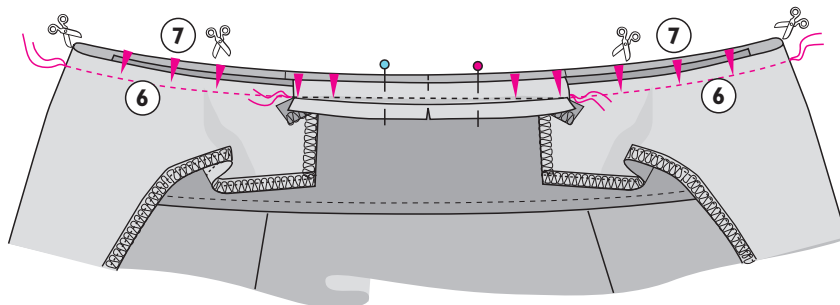


4. Pin collar to garment's neckline, with under collar and garment right sides together and aligning ends of collar with pattern markings on front panels.

Clip through seam allowance to seamline at yoke seam points on lower edge of upper collar.



5. Stitch collar to neckline, stitching both upper and under collar to necklines of front panels but only stitching under collar to back neckline.



6. Fold front facings to right side of front panels, sandwiching collar in between, and stitch them to neckline seam; start stitching from folded edge of each front panel and end it at yoke seam.

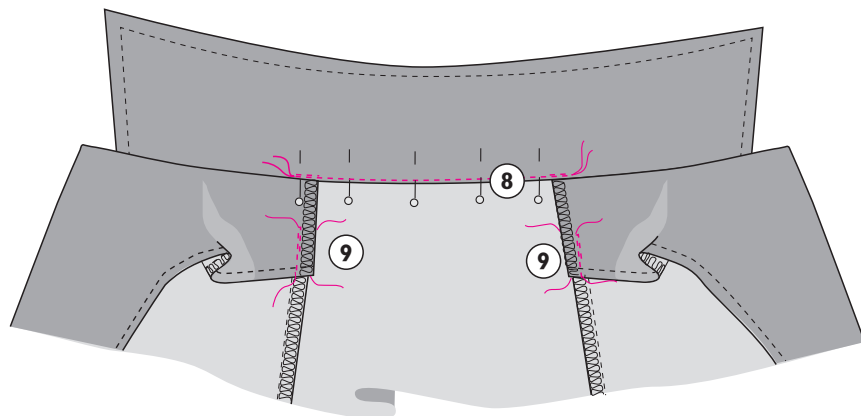
7. Trim neckline seam allowances slightly and clip them along curves. Clip through seam allowances of under collar and neckline to stitching at yoke seam points.

8. Turn front neckline corners right side out. Turn all back neckline seam allowances inside collar.

Turn seam allowance at lower edge of upper collar under, pin turned-under edge to neckline and stitch in place close to edge.

9. Stitch shoulder edges of front facings to yoke seam allowances.

10. Press neckline and collar gently.



© OTTOBRE design® | STUDIO TUUMAT OY

The designs, instructions and patterns are only intended for personal use by sewing hobbyists. All commercial or industrial use is prohibited. The designs, instructions, patterns, drawings and photos are protected by copyright laws and the right of

reproducing them by any means or in any form is exclusively reserved for the copyright holder. The transferring of the material to a device that can be used for copying it is also regarded as reproduction. **All rights reserved.**