



The collar instructions have been drawn up for men's shirts sewn from cotton poplin, chambray, lightweight denim, flannel, or similar fabric.

PATTERN PIECES

- collar x 2 (upper and under collars)
 - collar stand x 2 (outer and inner collar stands)
 - collar stand trim x 1
- plus shirt front panel x 2, shoulder yoke and back panel

Preparation: Cut all pattern pieces out carefully with 10 mm seam allowance.

Mark matching points on collar and collar stand pieces as well as on collar stand trim paying special attention to the following points:

- center-back points at top and bottom edges of both collar pieces and both collar stand pieces as well as at bottom edge of collar stand trim
- matching points (A) at top edges of collar stand pieces for ends of collar
- markings for shoulder lines on collar stand pieces and collar stand trim (to be matched with corresponding markings on shoulder yoke)

Stabilizing: Fuse interfacing (e.g. Vlieseline® H 200) to upper collar and both collar stand pieces.

1. Turn and press seam allowance at top edge of collar stand trim to wrong side. Pin and stitch trim to right side of inner collar stand. Machine-baste bottom edge of trim to bottom edge of collar stand.
2. Turn and press seam allowance at bottom edge of inner collar stand to wrong side and stitch along edge using presser-foot edge as guide.
3. Pin upper collar and under collar right sides together and stitch

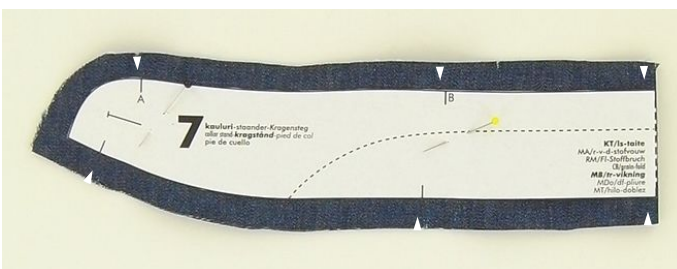
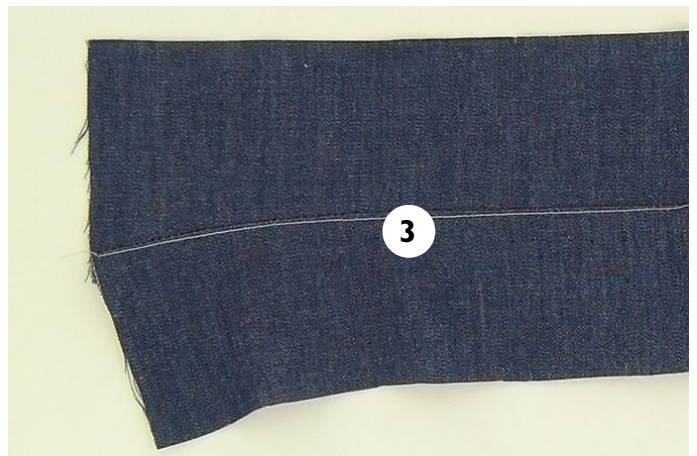
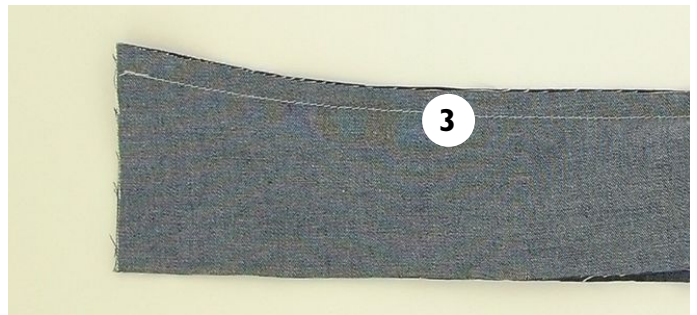
their top edges together. Understitch seam allowances to under collar close to seamline.

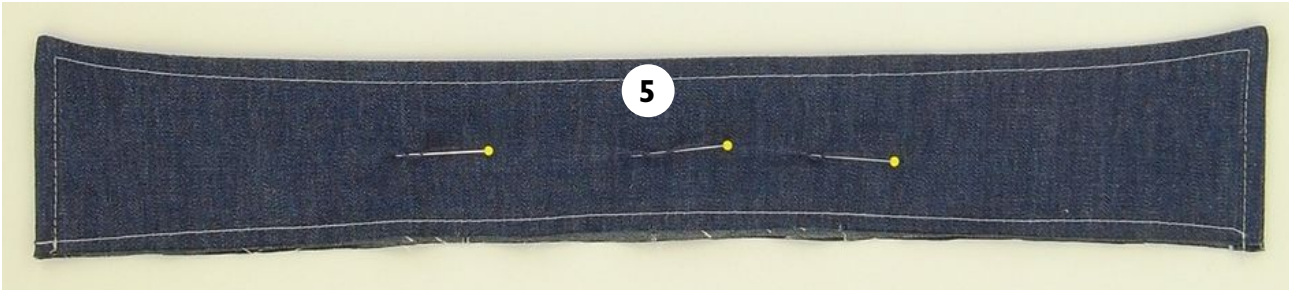
4. Place collar pieces right sides together, fold top-edge seam allowances onto under collar and stitch ends of collar. Trim corners. Turn collar right side out and press it flat.
5. Topstitch outer edges of collar using presser foot edge as guide. Pin 2 mm deep tucks on upper collar to allow for roll. Machine-baste bottom edges of collar pieces together.
6. Pin and stitch collar to top edge of inner collar stand, with upper collar and collar stand right sides together. Pin outer collar stand to inner collar stand right sides together, sandwiching collar in between, and stitch top edges of collar stands together.
7. Trim seam allowances slightly at curved ends of collar stand and cut out small notches from them. Turn collar stand right side out and press.
8. Pin bottom edge of outer collar stand to garment's neckline right sides together and stitch it in place from collar stand side.
9. Clip neckline seam allowances along curves.
10. Pin bottom edge of inner collar stand to neckline carefully, aligning it with neckline seamline. Stitch bottom edge of inner collar stand to neckline close to edge and edgestitch around collar stand at the same time.

Tip!

The secret of a beautifully constructed collar lies in cutting and interfacing the pieces carefully and stitching the collar with even 10 mm seam allowances. Make also sure that your machine stitches are even and look good on both sides. Experiment with topstitching on an interfaced piece of fabric before starting! Use topstitching thread (e.g. Epic no. 80) for stitching.

OTTOBRE







KAULUS MIEHEN PAITAN
 KRAAG HEREN OVERHEMD
 KRAGEN FÜR HERRENHEMD
 COLLAR FOR MEN'S SHIRT
 KRAGETILL HERRSKJORTA
 COL POUR CHEMISE D'HOMME
 CUELLO DE CAMISA DE HOMBRE



3 cm x 3 cm

