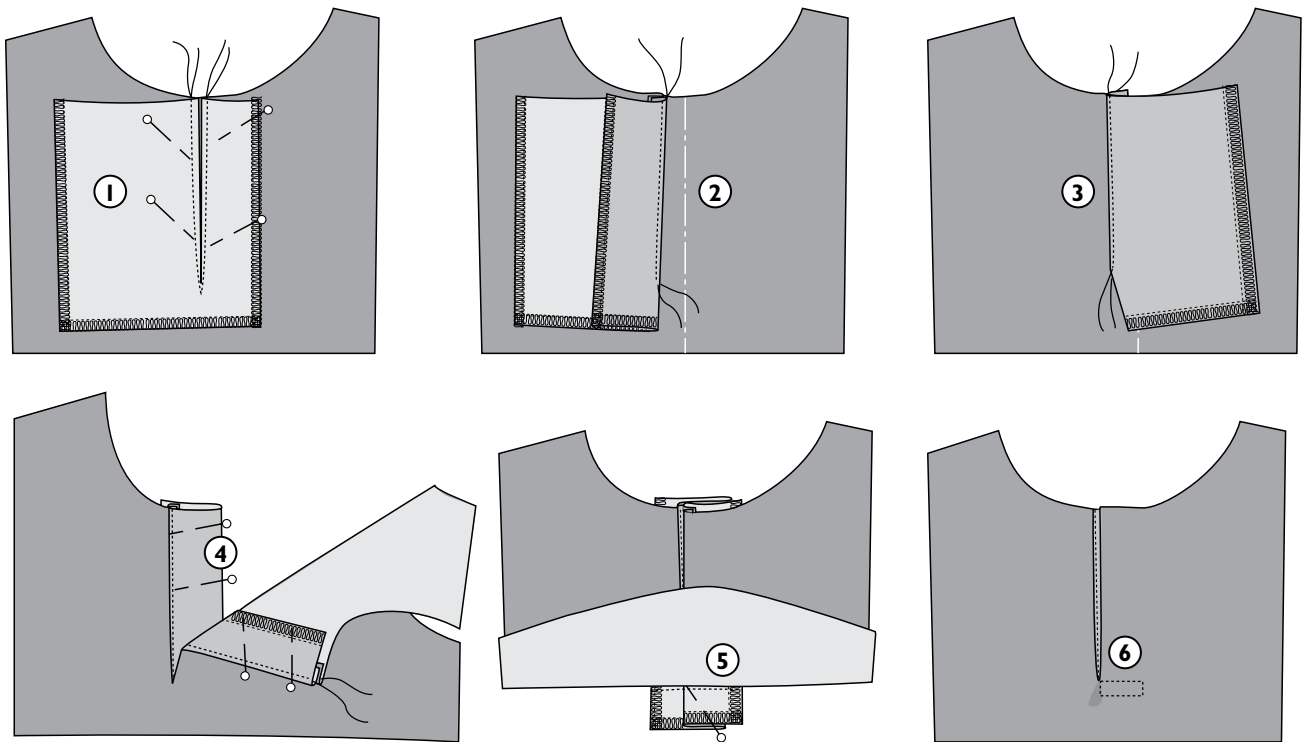


# FRONT PLACKET



Fuse interfacing to placket piece. Construct placket on front panel as follows:

**1.** Serge or zigzag raw side and bottom edges of placket piece. Slash placket opening on placket piece as marked on pattern. Pin placket piece to front panel right sides together (place slashed placket opening to the right of center-front line on front panel). Stitch along edges of placket with 3 mm seam allowance, gradually decreasing seam allowance as you approach bottom of placket. Slash placket opening on front panel between stitching lines.

**2. and 3.** Understitch seam allowances at each edge of placket opening to placket piece close to seamline.

**4.** Turn placket piece to wrong side of front panel. Fold placket piece on right-hand side of placket wrong sides together along marked foldline to form placket underlap.

**5.** Overlap placket piece on left side of placket (= placket facing) with placket underlap, pin them together and machine-baste their bottom edges together from wrong side.

**6.** Pin placket facing and placket underlap to bottom of placket from right side of front panel and secure them in position by stitching a rectangle at bottom of placket through all layers.

# OTTOBRE