

DOG PURSE

Approx. size 9 cm x 11 cm

ABOUT DESIGN

The purse can be worn round the waist as a belt bag and the straps can even be threaded through the pants belt loops. Besides coins, the purse can hold a cellphone or keys.

MATERIALS

- 12 cm black cotton fabric
- piece of white fleece
- side-release buckle, width 25 mm
- 3 cm Velcro tape, width 20 mm
- white and black embroidery thread
- piece of tear-away backing, Vlieseline® Stickvlies
- piece of double-sided interfacing, Vlieseline® Vliesofix

PATTERN

pieces

	black	white
1A+1B purse interior		-
2A+2B purse exterior		-
3 spot under eye	-	
4 nose	-	
5 spot	-	
6 ear	-	2+2

Pattern pieces include seam allowances!

CUTTING

Cut pattern pieces out and, following markings, join pieces **A and B**.

Cut purse exterior and interior from cotton fabric and ears, nose and spots from fleece as indicated on list of pattern pieces.

Cut also belt straps from cotton fabric as follows (see pattern sheet):

- left strap 10 cm x 15 cm
- right strap 10 cm x 50...60 cm

INSTRUCTIONS

Spots and nose:

1. Trace spots and nose on double-sided interfacing, fuse interfacing to wrong side of fleece and cut motifs out along their outlines. Remove paper backing and fuse motifs to right side of purse exterior as shown in design sketch.
2. Pin tear-away backing to wrong side of fabric behind motifs.
3. Appliqué along outlines of motifs with narrow short zigzag (= satin stitch).
4. Embroider mouth with reinforced straight stitch. Embroider eyes by hand.
5. Remove tear-away backing.

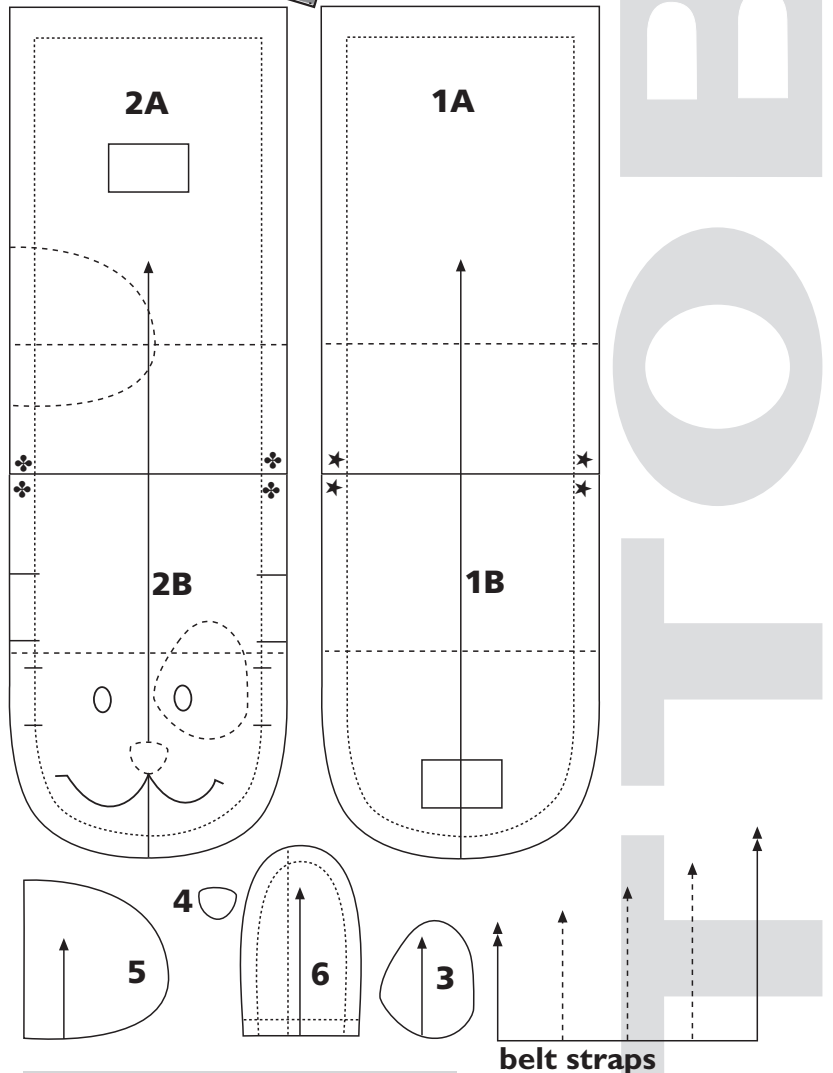
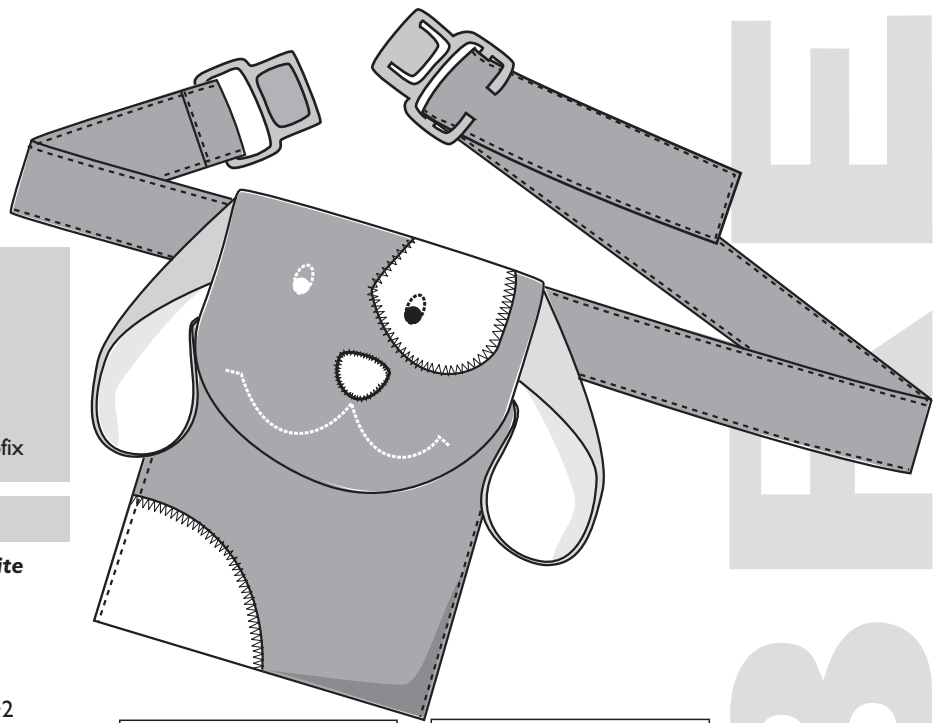
Belt straps: Press folds on belt strap pieces as marked on pattern. Pin edges of each strap piece together, fold seam allowances at one end in and topstitch both long edges and end of strap. Machine-baste belt straps to sides of purse exterior, right sides together, as marked on pattern.

Ears: Stitch ear pieces together in pairs, right sides facing. Trim seam allowances and turn ears right side out. Fold edges of ears as shown in design sketch and machine-baste ears to both sides of purse exterior, right sides together.

Velcro tapes: Stitch one half of Velcro tape to purse exterior and the other to purse interior as marked on pattern.

Joining: Stitch purse exterior and interior panels together, right sides facing, and leave small opening at straight short side for turning purse right side out. Trim seam allowances along curves and trim and taper corners. Turn purse right side out and topstitch short end, closing opening at the same time. Fold purse piece in half along foldline, interior sides together, and topstitch sides of purse together.

Finishing: Thread buckle halves on belt straps. Fold back non-adjustable end of belt strap and topstitch it to anchor buckle half in place; adjustable buckle half will stay in place without stitching. Secure ears to sides of flap with a few hand stitches.



CONTROL SQUARE

On the pattern sheet, there is a control square that should measure 2 x 2 inches (5 cm x 5 cm). By means of the square you can check that the patterns have been printed out at the correct scale. Measure the dimensions of the square on your print-out. If they are not correct, adjust the paper size setting to A4 and page scaling to 100% (or "none") on your printer and print out the patterns again.

DESIGN and REALISATION

studio
TUUMAT
design factory

COPYRIGHT © Studio Tuumat Oy

**KOIRA-PUSSUKKA
LITEN HUNDPÅSE
HOND TASJE
DOG PURSE
HUNDBEUTELCHEN**

1A

yhdistä 1A ja 1B ennen leikkaamista
sammanfoga 1A och 1B innan tillklipningen
leg 1A en 1B voor het knippen aan elkaar
join 1A and 1B before cutting
1A und 1B vor dem Zuschneiden aneinander heften

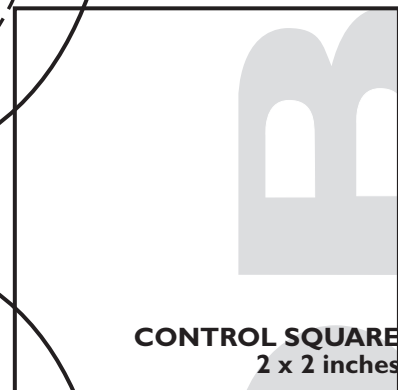
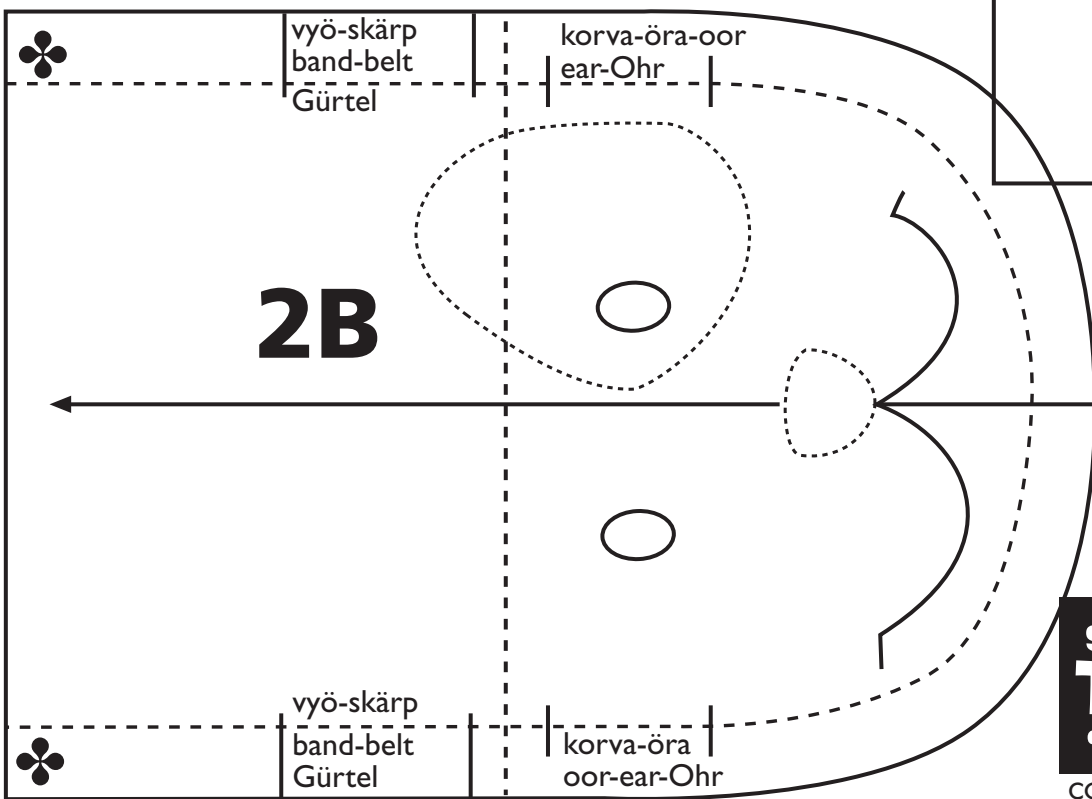
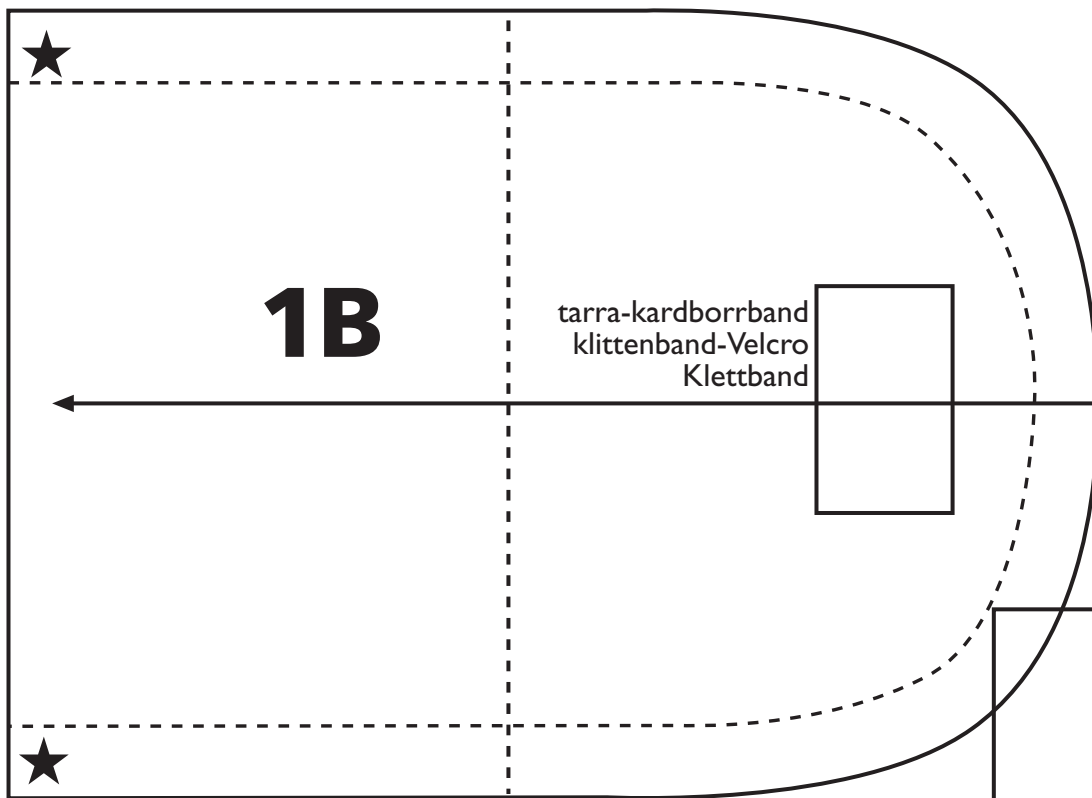
tarra-kardborrband
klittenband-Velcro
Klettband

2A

yhdistä 2A ja 2B ennen leikkaamista
sammanfoga 2A och 2B innan tillklipningen
leg 2A en 2B voor het knippen aan elkaar
join 2A and 2B before cutting
2A und 2B vor dem Zuschneiden aneinander heften

5

vyö - skärp - bandjes - belt straps - Gürtel
vasen-vänster-links-left-das Linke **10 x 15 cm**
oikea-höger-rechts-right-das Rechte **10 x 50...60 cm**



COPYRIGHT © Studio Tuumat Oy

