

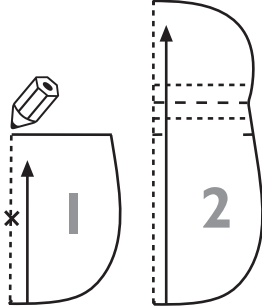
FURRY BAG

approx. size 18 cm x 20 cm

Add seam allowances before cutting bag panels out from fabric!

MATERIALS

- 30 cm faux fur
- 30 cm babycord for lining, button loop and shoulder strap
- 1 button, ø 28 mm



PATTERN PIECES

front panel	faux fur	lining fabric
back panel		

CUTTING

Trace separate pattern piece for front panel from pattern for back panel. Cut bag panels as indicated on list of pattern pieces.

Cut also:

- 4 cm x 140 cm strip for shoulder strap
- 4 cm x 9 cm strip for button loop

SEWING

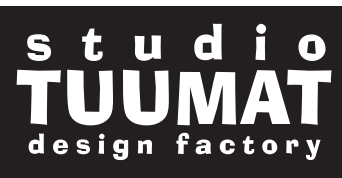
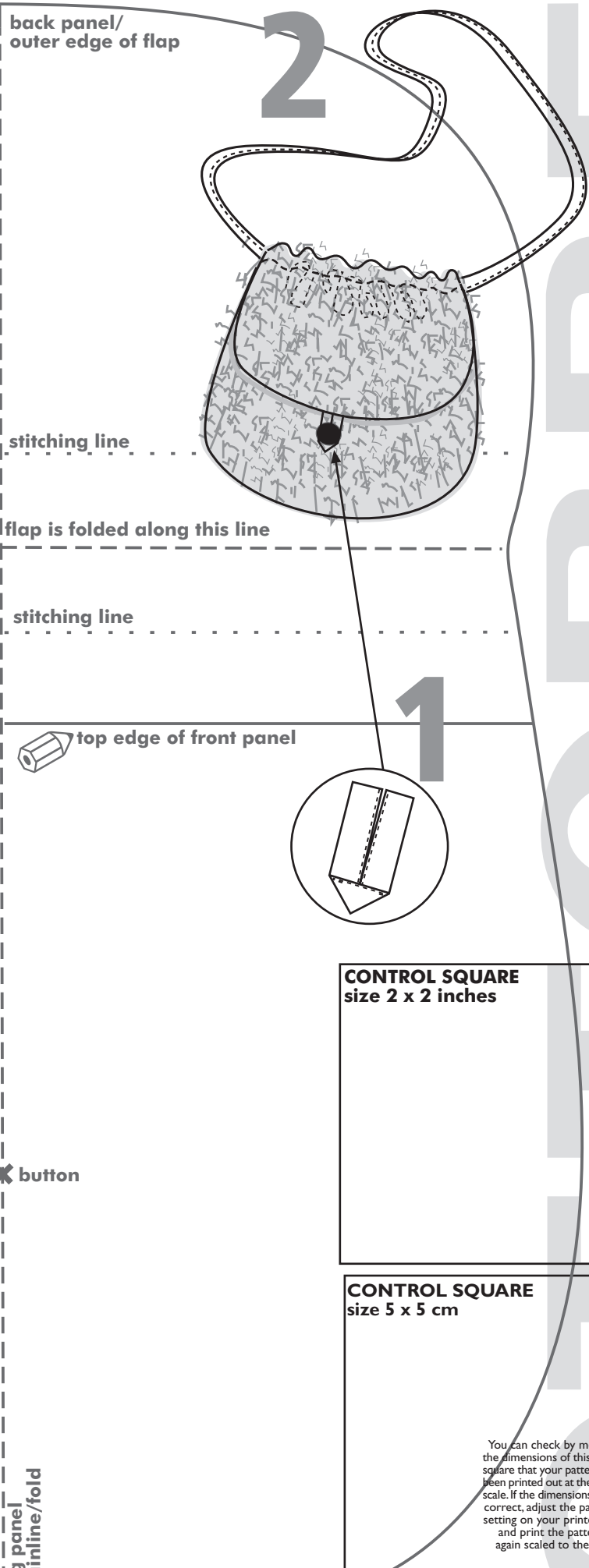
Preparation: Stitch ends of shoulder-strap strip together to form closed loop. Fold and press shoulder strap in half and turn seam allowances in (raw edges meet in the middle). Topstitch folded edges together. Fold and press button-loop strip in half lengthwise, turn seam allowances in (raw edges meet in the middle) and topstitch folded edges together. Fold button-loop strip in half at the middle, open strip out and fold each half down along center fold to form pointed end and topstitch triangle as shown in sketch.

Joining: Lay exterior front panel and front lining right sides together and stitch their top edges together. Understitch seam allowances to lining. Flip exterior front panel and front lining wrong sides together and machine-baste their seam allowances together. Machine-baste button loop at midpoint of top edge of exterior back panel, right sides together.

Lay **bag front section** right sides together onto exterior back panel, following pattern markings. Lay back lining panel right side down onto exterior bag panel, with bag front section in between. Stitch bag panels together all around and leave small opening at outer edge of flap for turning bag right side out.

Turn bag right side out and close opening by hand-stitching. Fold flap over on top of bag front section and place shoulder strap within fold. Stitch casing for shoulder strap through all layers.

Finishing: Sew button in place. Gather top edge of bag slightly by means of shoulder strap. Comb fur out of seams.



You can check by measuring the dimensions of this control square that your patterns have been printed out at the correct scale. If the dimensions are not correct, adjust the paper size setting on your printer to A4 and print the patterns out again scaled to the correct size.